

# Bedford Borough Safeguarding Children Board Annual Report 2010 – 2011



# Contents

<b>Preface .....</b>	<b>Page 3</b>
<b>Independent Chair’s Introduction and Summary of Progress in 2010-11.....</b>	<b>Page 4 - 9</b>
<b>Living in Bedford Borough .....</b>	<b>Page 10 - 14</b>
<b>1. The Strategic Priorities for 2010 -2011 .....</b>	<b>Page 15 - 23</b>
<b>2. Governance and accountability arrangements .....</b>	<b>Page 23 - 25</b>
<b>3. Monitoring and evaluation/quality assurance activity .....</b>	<b>Page 25 - 27</b>
<b>4. Progress on priority policy areas .....</b>	<b>Page 28 - 63</b>
<b>5. Priorities for 2011 – 2012 .....</b>	<b>Page 64 - 67</b>
<b>Appendix 1 Structure and Partner member attendance at Strategic Board meetings.....</b>	<b>Page 68 - 71</b>
<b>Appendix 2 Income for 2010-2011 .....</b>	<b>Page 72</b>
<b>Appendix 3 Protocol agreement between Bedford Borough Children and Young People’s Trust Board and Bedford Borough Safeguarding Children Board</b>	<b>Page 73</b>

## Preface

The Apprenticeship, Skills, Children and Learning Act 2009 introduced a requirement for Local Safeguarding Children Boards to produce and publish an annual report on the effectiveness of safeguarding in the local area. The report should provide an assessment of the effectiveness of local arrangements to safeguard and promote the welfare of children, set against a comprehensive analysis of the local area safeguarding context. It should recognise achievements and the progress that has been made in the local authority area as well as providing a realistic assessment of the challenges that still remain. (Working Together 2010, para 3.34)

The report should demonstrate the extent to which the functions of the Local Safeguarding Children Board as set out in Working Together are being effectively discharged. This should include assessments of policies and procedures to keep children safe, including:

- The policies and procedures for the safe recruitment of frontline staff
- An assessment of single and interagency training on safeguarding and promoting the welfare of children to meet the local needs
- Lessons learnt about the prevention of future child deaths which have been identified by the Child Death Overview Panel
- Progress on priority areas (e.g. child trafficking, sexual exploitation and domestic violence)

Annual reports should also include a clear account of progress that has been made in implementing action from Serious Case Reviews completed during the year in question; plans to evaluate the impact of these actions and monitor how these improvements are sustained over time. Where Serious Case Reviews have been commissioned but not completed the annual report should note action already taken to learn lessons arising from the relevant cases. Common themes and recurring recommendations may be addressed together but the report must be clear on action taken in response to individual Serious Case Reviews.

The report should provide robust challenge to the work of the Children's Trust Board in driving improvements in the safeguarding of children and young people and in promoting their welfare.

## Independent Chair's Introduction and Summary of Progress in 2010-11

Once again, 2010-11 has been a year of significant change for the Local Safeguarding Children Board that serves Bedford Borough. The former Bedfordshire Local Safeguarding Children Board was restructured to provide two separate Local Safeguarding Children Boards to serve the new local authority areas of Central Bedfordshire and Bedford Borough. The structure chart on page 71 shows how the Boards have their own Strategic Boards which have a direct relationship with the Children's Trusts and yet have maintained joint functions in a shared Steering Group and other sub-groups. Our significant achievements and areas for development this year have been;

### Strengths

#### 1. The effective strategic engagement of partner agencies in the work of the Bedford Borough Safeguarding Children Board

##### i) Membership, representation and engagement

The year 2010-11 has been characterised by the strength of collaborative working to improve multi agency responses to safeguarding issues. Attendance at meetings has been good and members have taken a strong lead within their agencies. The engagement of General Practitioners and General Practitioner Practices has improved greatly largely due to the work of the Named Doctor (General Practitioner), Designated Nurse and Safeguarding Children Board's Training Team. Uptake of training by General Practitioners has increased significantly as has the number of General Practitioner practices seeking advice and support. Engagement with services for adults, which is vital in addressing issues of domestic abuse, substance misuse and mental health in parents and their impact on children, has been strengthened through the representation on the Local Safeguarding Children Board of Bedford Borough Adult Social Care Services and Adult Mental Health Services. Representation has been secured from the Police Authority and Children and Families Court Advisory Service, CAFCASS (once again) and plans for the recruitment of Lay Members have been agreed. Engagement with Early Years Services and schools is improving and strategic engagement with schools has been identified as a priority for the coming year.

##### ii) Communication

All Local Safeguarding Children Board's leaflets have been reviewed, rebranded and updated. Interagency safeguarding procedures have been updated to reflect Working Together 2010 and are in line with neighbouring authorities to support cross boundary working. Bedford Borough Safeguarding Children Board has a well maintained website with a wealth of information including all multi agency

protocols. However it has been identified that Electronic communication is not secure and not all necessary partners are included in information sharing protocols.

iii) Response to challenge

The Bedford Borough Safeguarding Children Board has made good progress in the implementation of the interagency escalation of safeguarding concerns policy, developed following the Central Bedfordshire Child J Serious Case Review. There is wide knowledge of the policy and evidence of its use. The next step for 2011-12 will be to audit its effectiveness. Accountability of individual agencies for having necessary policies procedures and practices in place continues through the structured, evidence based Section 11 reporting framework. The outcome of the Section 11 updates in 2010 identified that agencies had met standard 6 'Recruitment, vetting procedures and allegations against staff', particularly in relation to their policies and procedures for the safe recruitment of frontline staff.

iv) Performance Management

The decision of Bedford Borough Council to maintain the Bedford Borough Children's Trust and the protocol between the Trust and the Bedford Borough Safeguarding Children Board allows the ongoing relationship of challenge to performance, contribution to priorities and strategic planning through the Children and Young People's Plan. The Portfolio Holder for Bedford Borough Council's Children's Services and Chair of the Children's Trust sits on the Strategic Board of the Bedford Borough Safeguarding Children Board and the Bedford Borough Safeguarding Children Board Chair is a member of the Children's Trust Board.

Performance management of the child protection process resulted in 100% quoracy in Child Protection conferences and enables further scrutiny of appropriate representation and ownership by partner agencies. Section 47 processes for Strategy Meetings now ensure that all joint agency meetings are face to face. (Central Bedfordshire Child J Serious Case Review recommendation)

Recommendations from the Central Bedfordshire Child J Serious Case Review relating to a Bedfordshire County Council case located in what is now a Central Bedfordshire area has been included in the Bedford Borough Safeguarding Children Board Business Plan following on from the Central Bedfordshire Child J Serious Case Review Action Plan which was monitored by the Joint Executive Serious Case Review Panel.

Part of the Bedford Borough Safeguarding Children Board work programme in 2010-2011 was to review the recommendations of all previous Serious Case Reviews within the last 5 years. This also coincided with a legacy review of a case by the Strategic Health Authority and much effective reflection took place about the learning from that case. Similarities with findings in Bedford Borough Child

A and B Independent Management Review and Central Bedfordshire Child J Serious Case Review were identified as well as learning about the process for effective reviews. Where improvements were not clear or issues were identified as recurring, these have been added to the Bedford Borough Safeguarding Children Board Business Plan for 2011-12.

Recommendations from the Central Bedfordshire Child J Serious Case Review and the Independent Management Review of Child A and B made recommendations regarding national policy and practice which were adopted by the now Department for Education.

- v) Improvements in policy and practice in three areas; children at risk of sexual abuse, children experiencing the impact of domestic abuse and children subject to detention.

The Central Bedfordshire Child J Serious Case Review and the Bedford Borough Child A and B Independent Management Review highlighted failures in practice in relation to child sexual abuse.

Concerns were raised in the Serious Case Review regarding decision making and advice to the Police by the Crown Prosecution Service lawyers in the case of the management of child sex offenders. There needs to be a greater recognition of the safeguarding needs of child victims of all crimes of sexual abuse. Meetings have taken place with the Crown Prosecution Service and agreement reached that the Crown Prosecution Service would be represented on the Bedford Borough Safeguarding Children Board.

The dissemination events for these two reviews in September 2010 were delivered to over 300 practitioners from partner agencies including both local authorities. These were powerful events with direct outcomes for children in that a proportion of individual practitioners at the event identified actions they needed to take immediately having recognised that some of their current cases needed urgent attention or discussion with a supervisor/manager. Further work is needed to audit outcomes of this work in respect of the low percentage of children subject to child protection plans under the category of sexual abuse.

Work from the Multi Agency Risk Assessment Conference demonstrates effective multi agency work around improving responses to domestic abuse cases.

Funding was provided by Government Office East to support a re-launch of the 'Safe and Sound Education' packs which were launched by the Domestic Abuse Partnership in March 2011.

The Bedford Borough Safeguarding Children Board has delivered three 1 day "Impact of Domestic Abuse on the Child" courses in 2010-11.

A report previously submitted by the former Bedfordshire Local Safeguarding Children Board to the Domestic Abuse Partnership has been updated and revised for presentation to Bedford Children's Trust to inform service response and service commissioning.

Bedford Borough Council has developed and launched the Risk and Resilience matrix – assessment tool to inform safeguarding assessment through all assessment processes including the Common Assessment Framework.

Increased resource has been provided for the Police Public Protection Unit in response to the Central Bedfordshire Child J Serious Case Review resulting in an increase of 14 staff for the child and domestic abuse investigation teams. There have been improvements in the sex offender management team caseloads which are now down to national average.

Work from the Multi Agency Risk Assessment Conference demonstrates effective multi agency work around improving responses to domestic abuse cases.

Although children are no longer detained with their families at Yarl's Wood Immigration Removal Centre, the Bedford Borough Safeguarding Children Board did a considerable amount of work to support the development and maintenance of good safeguarding practice at the Centre. It maintained representation on the Board from SERCO (service providers) and UKBA (Commissioners) and managed a politically sensitive Independent Management Review of practice in relation to Child A and Child B including publishing the findings and recommendations in an Executive Summary. Significant changes were made to policy and practice and it is hoped that the lessons learned from this review will be evident in the new arrangements for the management of families subject to deportation.

## **Areas for Development**

1. Maintenance of early intervention and prevention in the light of reduced management and operational capacity across services:
  - 1.1. Work on a review of the use of Common Assessment Framework and the Multi Agency Allocation Group is underway. The Bedford Borough Safeguarding Children Board and Children's Trust will identify how this work will be taken forward and how universal services can be supported to prioritise services and responses to need and to review how schools are addressing bullying and e safety.
  - 1.2. Existing capacity within the faith communities across Bedford Borough will be further explored through Voluntary Organisations for Children, Young People and Families (VOCypf) to map services for children, young people and families and to have a dialogue with service providers about how these might best be supported.

1.3. The Bedford Borough Safeguarding Children Board has prioritised domestic abuse, sexual abuse and Child Protection processes over the last 2 years in response to the identification of these as local priorities. Work has also been progressed on missing children, joint work with adult mental health services on parental mental health, sexual health and on working with young people at risk of self harm and suicide.

1.4 Supporting young people by increasing their access to contraception and sexual health services NHS Bedfordshire has developed an Undercover Condom Card Scheme policy to sit alongside the Safeguarding Sexually Active Young People Protocol 2011. The Undercover C-Card Scheme enables young people under the age of 25 to access free condoms from a range of locations within Bedfordshire.

1.5. The South Essex Partnership Trust (SEPT) has worked very closely with Children's Social Care Services to ensure that those working with adults with mental health problems, address risk to any children in the family. There have been an increased number of referrals to children's social care from South Essex Partnership Trust (SEPT).

1.6. The Bedford Borough Safeguarding Children Board Independent Chair currently chairs a multi agency and cross boundary strategic group planning a co-ordinated response to a cluster of young people where there are safeguarding concerns.

2. Coordinating activity around responses to children and young people who fall into low incidence but high risk groups

2.1. Further work to do has been identified through a needs analysis around honour based violence, trafficked children, risk and parental drug and alcohol use, and the development of work around the radicalisation of young people. Reports on these activities will be sought by the Bedford Borough Safeguarding Children Board in 2011 - 2012.

3. Looked After Children and health care

3.1. There is a need to improve the timeliness and completion rates for Looked After Children health assessment as identified through data and underlined by the NHS Bedfordshire Intensive Support Visit in 2010. There is a need to improve health care take up by Looked After Children particularly mental health services.

3.2. There is good ownership and accountability for improvement through the action group established to address this. Good procedures and partnership arrangements are in place for all other aspect of Looked After Children.

3.4. Work is underway with reconfiguring and re-commissioning Child and Adolescent Mental Health services.

3.5. Acute services were commended by the Strategic Health Authority in March 2010.

3.6. The Bedford Borough Safeguarding Children Board has plans to incorporate and review Looked After Children data in relation to safeguarding in order to identify additional issues and priorities. These are to be prioritised by the Joint Steering Group.

4. Comparatively high levels of core assessments undertaken and increase in number of children who are subject to Child Protection Plans. Bedford Borough had a 40.8% increase during 2010/11. The Association of Directors of Children's Services report a national increase of 33%.

4.1. Work on this has been undertaken and reports on the figures and activity have been presented to the Bedford Borough Safeguarding Children Board and to the Council's Performance, Development and Review Committee. There is a need to do further work in 2011-12 to explore the conversion rates of referrals to Initial Assessments to Core Assessments and Child Protection Plans.



Laura Eades  
Independent Chair of Bedford Borough Safeguarding Children Board

## Living in Bedford Borough

Bedford Borough is a mix of rural and urban areas with a population of around 155,700. More than half of the population lives around Bedford town and in Kempston towards the south of the Borough. The people are younger on average compared to the rest of the country. People from many different nationalities live in Bedford. Average earnings for people living in the Borough are higher than in many other areas of the country. However, there are parts of the Borough where people are poorer than the national average. People in Bedford are slightly healthier than most other areas in England.

The population of children and young people (aged 0-19) is estimated at 39,000 or 25% of the Borough total. This is slightly higher than the average in England in most age groups, especially in 10-14 year old boys. There are slightly more boys than girls in the Borough. Between 2001 and 2008, Bedford Borough's population aged 0-19 is estimated to have increased at a slower rate than the rest of the Borough's population, with a decline of almost 5% estimated in the age group 5-9 years.

In January 2009 the school age population (aged 5 -16) in Bedford Borough was recorded as 24,476. There are an estimated 9,600 children aged 0-4 (6% of the total population, or 25% of the 0-19 population).

Nearly 2000 babies were born in Bedford Borough in 2006. In the East of England the number of live births increased by 15% between 2001 and 2007. The proportion of births to mothers born outside the UK has risen from 12% to 19%. In Bedfordshire, of the total births in 2007, 82% were from mothers born in the UK with 18% from mothers born elsewhere (3% from the new European Union countries). This reflects a shift of 5% from 2001 and is line with regional averages. However, in reality this is likely to be concentrated in Bedford Borough, rather than across county. Bedfordshire is looking at 6% growth of women of child bearing age over the next 10 years.

## Ethnicity of children and young people

In the 2001 census, 29,000 (76%) of Bedford Borough's children and young people (aged 0-19) were identified as White British with the remaining 9066 (24%) coming from other ethnic backgrounds.

By January 2009 32% of school age pupils described themselves as other than White British. A further 7% (1705 pupils) did not have an ethnicity listed and could potentially increase this proportion as high as 39%. In 5 urban wards, the number of pupils of an ethnic minority background is over 50% - Queens Park (88%); Cauldwell (68%); Castle (54%); Kingsbrook (54%); and Harpur (51%). There is a greater proportion of ethnic minority pupils in the younger age groups.

There is no school in Bedford Borough with a completely homogenous ethnic population, and all schools, however small, have at least one pupil who is not categorised as White British. 53 out of 76 schools in Bedford Borough have a White British majority and 14 schools have more than 80% White British pupils. 6 schools have a more than 80% of pupils from an ethnic minority.

In one urban lower school, 91% of pupils are from ethnicities other than White British and in another lower school, 27 different home languages are spoken by pupils in a school of less than 175 pupils.

The January 2009 Schools census showed that

- White British pupils form the largest group with 61% of the total
- Indian pupils form the largest minority group (1321 pupils or 5.4% of the total)
- Bangladeshi pupils comprise 4% of the total, with 957 pupils
- Pakistani pupils form a group of a similar but slightly smaller size (801 pupils, 3%)

These have all shown slight growth since the 2001 census of dependent children, with the biggest shift in the Bangladeshi group from 2.1% to 4%.

There is one Traveller site in Bedford Borough, and 47 children and young people who have formally identified themselves as Gypsy, Roma or Traveller ethnicity, but this number could rise to about 70 if all who are known to be Travellers were included. We know that children and young people from Traveller backgrounds form the lowest achieving ethnic group locally and nationally, with anecdotal evidence that this group is the most socially discriminated against.

## Deprivation

Deprivation and inequality in the United Kingdom rose for the third time successive year (based on 2007-08 data) with the poorest 20% seeing a 3% decline in real income. This will have been intensified with the recent economic downturn. The Citizens Advice Bureau in Bedford reports an increase of 63% in the number of people contacting them with debt problems. The United Kingdom is considered to have one of the highest income gaps in the world (measured between the richest fifth and the poorest fifth).

While Bedford Borough is in the mid range of local authorities on the overall level of deprivation, ranking 183 out of 354 local authorities in England (where 1 is the most deprived) on the 2007 Index of Multiple Deprivation (IMD), there are pockets of significant deprivation in Bedford

and Kempston towns. Parts of Castle, Cauldwell and Harpur wards are among the 10% most deprived areas in England and in the top 2% in the East of England. A further 6 areas, all in Bedford/Kempston, are among the 20% most deprived areas nationally. High deprivation levels are correlated with low life expectancy, unhealthy lifestyles, poor educational attainment, high rates of worklessness, poor housing quality and overcrowding, and high levels of crime and anti-social behaviour. Areas of high deprivation in Bedford and Kempston generally have a significantly higher proportion of minority ethnic groups than the Borough as a whole.

Overall, almost 20% of children in the Borough live in income deprived households according to the Income Deprivation Affecting Children Index measures in 2007, but rates in some wards are much higher. The highest rates of child poverty are in Kingsbrook (41%) and Queens Park (38.7%) wards: Bedford Borough has 9 areas among the 10% most deprived in England and a further 9 among the 20% most deprived. All 18 are located in either Bedford or Kempston.

In the most deprived areas within Castle, Harpur and Kingsbrook two-thirds of children live in income deprived households, and a further four areas in Goldington, Queens Park, Cauldwell and Kempston North have rates of 50%.

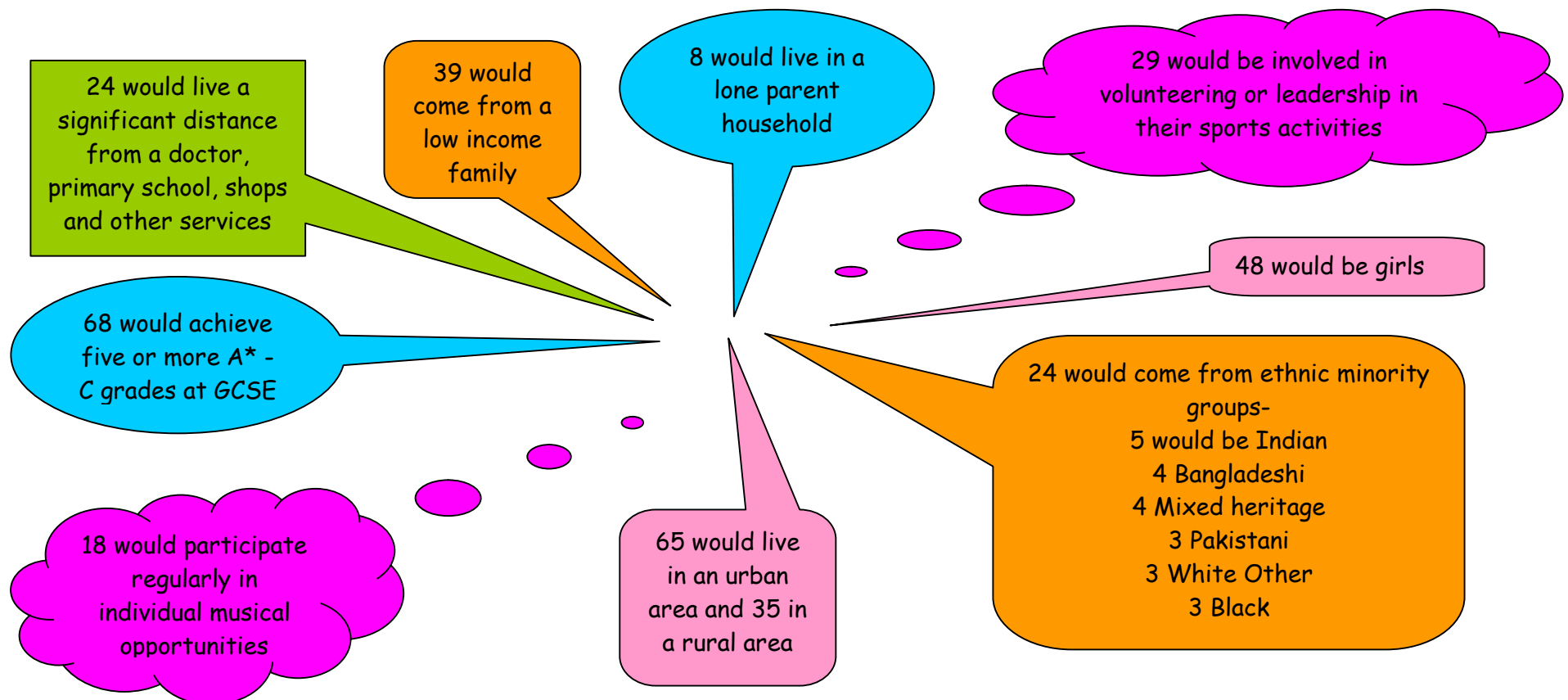
According to Child Tax credit data, 39% of children in Bedford Borough live in low income families. Across the whole Borough, 19% of children live in workless families although in some wards this is as high as 30%. Nationally the majority of children living in poverty have at least one parent in work but their earning is so low that the family is unable to rise above the poverty line.

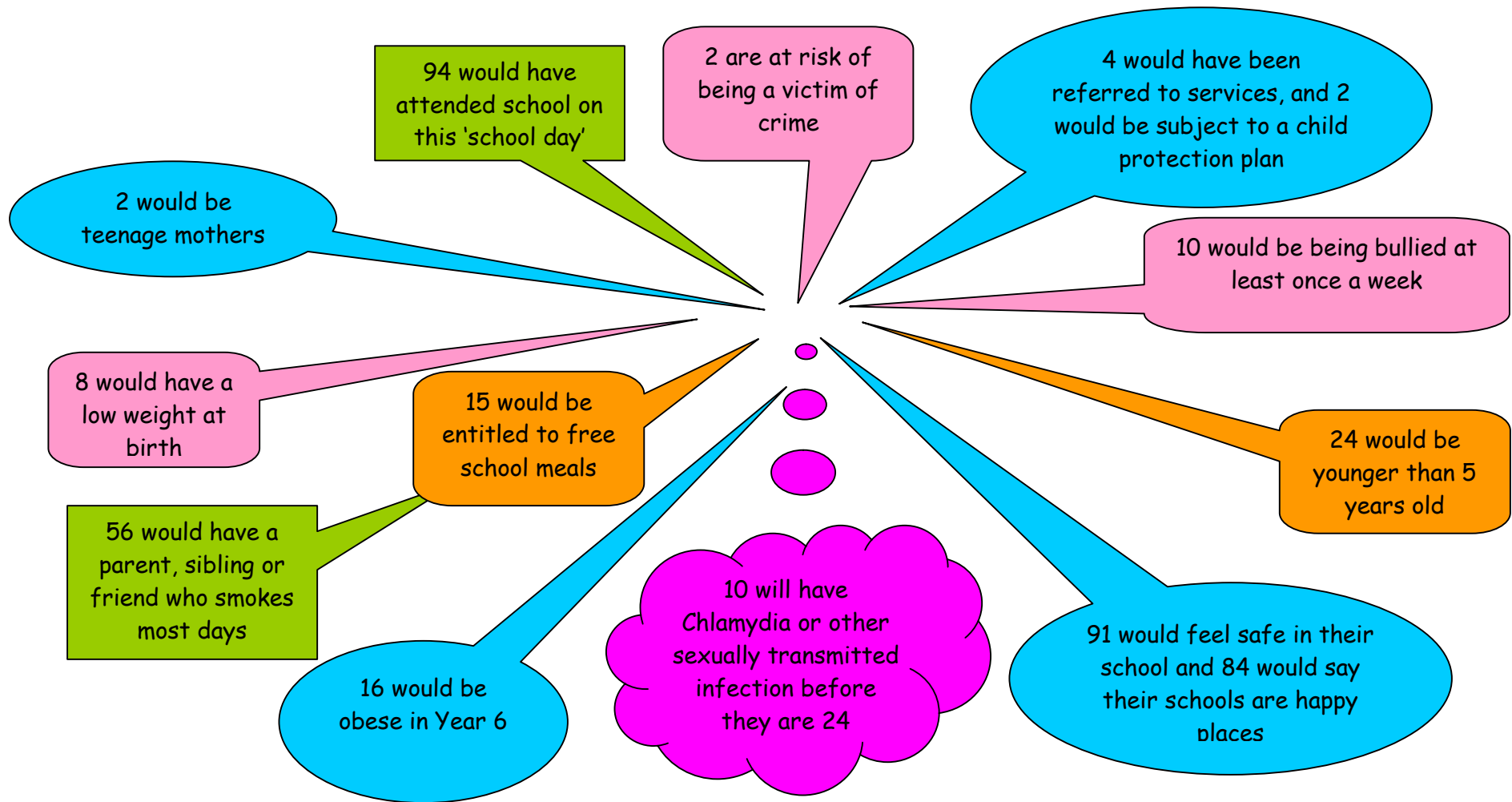
Around 15% of pupils in state schools across the country are entitled to free school meals. In Bedford Borough this figure averages 13.4% of pupils were eligible to receive free school meals, and 78.2% of pupils who were eligible received a free school meal. There has been an overall decrease of 0.41% in the number of pupils entitled to free school meals since 2008. The proportion of children eligible for Free School Meals varies greatly by ward and exceeds 25% in Queens Park and Kingsbrook.

The rural areas of the Borough (roughly a third of the total) do not generally appear to suffer from significant deprivation. There are however pockets of deprivation. Of the 35 most deprived areas in the Borough, only 1 is rural. However, many of the Borough's rural areas do suffer from inaccessibility to such essential services as a General Practitioner, primary school, post office and supermarket. When considering geographical barriers, 14 areas in the Borough are among the 10% most deprived in England in access to services (areas in Riseley, Roxton, Bromham and Turvey being most affected), and a further 16 are among the top 20%. Indeed, 70% of the Borough's 55,000 rural residents live in areas which are among the 20% most deprived areas in England in terms of access to services.

In developing the Bedford Borough Children and Young People's Plan, a thorough needs analysis was undertaken to build on what is known about what families in the Borough need and want. The following figures give a snapshot of what it is like to be a child or young person living in Bedford Borough and all the information is taken from the needs analysis.

If Bedford Borough were a Borough made up of 100 children and young people aged between 0 and 19 years, then...





## 1. The Strategic Priorities for 2010 - 2011

1.1 Bedford Borough Safeguarding Children Strategic Board had four strategic priorities for 2010 - 2012. These have been identified as a result of learning from Serious Case Reviews in Bedfordshire and from the national biennial review of Serious Case Reviews and the functions within Working Together to Safeguard Children 2010. These strategic priorities were:

1. **Domestic Violence** – To ensure that children and young people who are in contact with adults who perpetrate domestic abuse are protected.
2. **Bullying including e-safety** - To ensure that children and young people consider themselves safe and to reduce the risk of harm in relation to bullying. To empower children and young people to responsibly use communication and Information technologies and to equip parents, carers and organisations with information to fulfil their safeguarding responsibilities
3. **Sexual Abuse** – To ensure that children and young people are protected from sexual abuse and that agencies are able to recognise the dangers and risks presented by sexual perpetrators through an understanding of risk assessment procedures.
4. **Creation of Effective Local Safeguarding Children Board** – To ensure that arrangements are in place to create a coordinated and effective Bedford Borough Safeguarding Children Board.

They were complemented by 7 objectives which were considered to be the core business of the Board:

5. To promote safeguarding for children in Bedford Borough
6. To continue to develop the Bedford Borough Safeguarding Children Board functions and arrangements in line with the Local Safeguarding Children Board's extended role
7. To ensure that a comprehensive, set of multi-agency policies and practice guidance is available to all staff working with children across Bedford Borough
8. To further develop the agreed performance framework to measure and report on safeguarding improvement
9. To ensure the effectiveness and quality of the multi agency safeguarding training in order to improve outcomes for children
10. To ensure that Serious Case Reviews are initiated appropriately and are timely, of good quality, and deliver maximum learning for all agencies
11. To ensure safer recruitment practices across all agencies working with children in Bedford Borough

1.2 The progress against the objectives has been considered at the Joint Steering Group and movement has been made in most areas though some further work will be required in the area of training as this is reviewed during 2011-2012. A greater integration between Luton and Bedford Borough training functions with Central Bedfordshire is under development.

1.3 Board members received progress reports at every Strategic Board and a final review of the Business Plan 2010-2011 has informed decisions around priorities for 2011-2012. The objectives themselves will continue to be a significant feature of safeguarding activity and will continue to be picked up in audits and management reviews.

1.4 The key areas of progress/achievements in relation to these priorities (and others which may have emerged during the year) with evidence of improved outcomes are;

#### **1.4.1 Domestic Violence**

- Funding was made available by Government Office East towards a re-launch of the Safe and Sound Education packs. The Bedfordshire Domestic Abuse Partnership successfully launched its Safe and Sound Education packs at an event on the 9 March 2011. The pack is available in the form of a CD Rom and it can be used by Lower, Middle and Upper Schools to educate children and young people about healthy relationships
- Bedford Borough Safeguarding Children Board has delivered three 1 day 'Impact of Domestic Abuse on the Child' courses in 2010/2011
- Bedford Borough Safeguarding Children Board also promotes and assists with the applications for the Multi Agency Risk Assessment Conference training and the Domestic Abuse training via the Domestic Abuse Partnership
- A report identifies services currently available to children and young people and where there are gaps in services. This has been revised and will be presented by the Independent Chair of the Bedford Borough Safeguarding Children Board to the Bedford Borough Children's Trust.
- To ensure a shared understanding of assessment and management of risk to children and young people, Bedford Borough Council is engaged in two projects. One in partnership with 'Research In Practice' to deliver a framework for reflective and evidence informed practice. Secondly In the development of a Risk and Resilience Matrix to inform Safeguarding Assessment and practice. Both due to be implemented in Summer 2011.

#### **1.4.2 Bullying including e-safety**

Bedford Borough Council's Anti Bullying Strategy was initially launched in November 2009 and was subject to a review during this year. Work has been developing with Integrated Youth Service (IYS) and Integrated Youth Service Anti-bullying champions appointed in each school cluster to support the development of community focused strategies for tackling and preventing bullying behaviour. This has led to children and young people feeling more robustly protected and advised.

The Anti Bullying Coordinator advises that currently there is no definitive measure in terms of children's experience of bullying apart from 'Tellus 4' (survey) which puts Bedford Borough above the national average in terms of numbers of children experiencing bullying. A pupil perception survey was produced as an online questionnaire and a link to the questionnaire was distributed to Middle and Upper Schools across Bedford Borough. Schools asked their pupils to complete the survey whilst at school. The survey of took place in November 2010 to coincide with National Anti-Bullying Week.

The percentages stated are calculated from all respondents giving a valid response to that question; those not giving a response are excluded. Where percentages do not add up to 100, it is due to rounding or where questions allowed multiple responses. The base figure given refers to the total number of respondents who answered each question.

**Responses** - Overall, 1346 pupils participated in the survey from 8 schools. Several pupils chose not to state which school they attended or give demographic details such as year group or gender.

**Sample Profile** - The majority of responses (90%) come from Middle Schools, equally spread between Years 6, 7 and 8. This must be considered when looking at the results. The sample contains a good ethnic mix with 38% reporting being Non-White British, and 10% reporting their first language as not being English. This reflects the 2010 School Census where 35% of respondents reported being Non-White British.

**Results Summary** - The following are the reported bullying figures, and includes those that responded 'yes, a little' and 'yes, a lot' and all questions refer to the last twelve months.

- 35% reported being bullied in school
- 16% reported being bullied outside of school
- 54% reported having seen bullying in school
- 27% reported having seen bullying outside of school
- 14% report having bullied someone

When broken down by various characteristics, those reported as being disabled, having a statement of special educational needs (SEN), and being in care reported higher incidences of the instances of bullying. This must be treated with caution due to the relatively small numbers of respondents within the sample for these categories (disabled – 52, Special Educational Needs – 42, in care - 32).

Verbal bullying was the most common form of bullying inside school (73%). The most common location for bullying outside of school is reported as 'somewhere I play' (51%) followed by 'on my way to and from school' (46%).

Telling a parent or carer was the most commonly reported action for both bullying inside school (48%) and bullying outside of school (53%). The most commonly reported outcome is that something was done that stopped the bullying, though this still represents less than half of respondents (inside school – 41%, outside of school - 38%). When plotted against each other it shows that those telling a parent/carer or member of school staff are more likely to report that something was done that stopped the bullying.

The vast majority report that their school is a 'happy and caring school' (45% - usually, 44% - some of the time) and also that they 'feel safe' at school (57% - usually, 36% - most of the time / places).

Less than half of respondents reported being involved in developing their schools anti bullying work. The majority, however, reported that their school does mark Anti-Bullying Week (78%). There was a high level of awareness of school activities such as assemblies about bullying (65%), lessons about bullying (60%) and other anti-bullying activity. There was less awareness about counselling (25%) and the school taking action against homophobic bullying (27%).

Schools in Bedford Borough have been encouraged to take advantage of the Child Exploitation On-line Protection resources and training available, updates and information are circulated via email. Bedford Borough Council has some learning and development available on the Internet Safeguarding Children and keeping Children Safe on the Research in Practice website. The Bedford Borough Anti-bullying Champions have been provided with information regarding 'The Internet and Safeguarding Children' training in the Workforce Development Portfolio. This area of work continues to be one for development and coordination into 2011-2012 for the Bedford Borough Safeguarding Children Board.

### **1.4.3 Sexual Abuse**

- Messages from Central Bedfordshire Child J Serious Case Review have been disseminated via all courses and specific seminars/workshops available to practitioners
- A Jargon busting tool has been developed and disseminated across the 3 Local Safeguarding Children Boards in Bedfordshire.
- The Protocol and Guidance – 'Working with Sexually Active Young People' has been revised and signed off by the Bedford Borough Safeguarding Children Board.
- The Protocol and Guidance – 'Working with Sexually Active Young People' has been adopted by Luton Safeguarding Children Board.
- The Bedford Borough Safeguarding Children Board was reassured by Bedford Borough Council's Executive Director for Children's Services, Schools and Families that the current commissioning process in respect of external risk assessors in child sexual abuse cases was designed to seek contractors with high professional standards and proven skills, and the integrity expected of a responsible public sector organisation.
- An escalation procedure was developed and signed off by Bedford Borough Safeguarding Children Board in response to the findings in the Central Bedfordshire Child J Serious Case Review that practitioners did not challenge each other's practice and decision making as appropriate to

safeguard and promote the welfare of the children in the family.

#### **1.4.4 Creation of Effective Local Safeguarding Children Board**

- Bedford Borough Safeguarding Children Board members agreed and signed a constitution in June 2010
- Bedford Borough Safeguarding Children Board members signed off the Business Plan in June 2010
- The development and ongoing maintenance of a dedicated Local Safeguarding Children Boards website
- To improve the effectiveness of the relationship between Bedford Borough Safeguarding Children Board and the Bedford Borough Children's Trust in order to ensure safeguarding is improved. Local Safeguarding Children Board Independent Chair delivered annual report to Bedford Borough Children's Trust in September 2010 and will report to Bedford Borough Council Children's Services Overview and Scrutiny Committee on 10 October 2011.
- To improve the engagement of Schools in Bedford Borough Safeguarding Children Board in order to continuously improve the skills and knowledge of schools in good safeguarding practice. The Council's Assistant Director for Vulnerable Children and Children's Social Care presented Key Expectations to Chair of Governors. A Safeguarding Aide Memoire and Poster was circulated to all Schools within Bedford Borough.
- Continued representation from the Police Authority has been secured in this year.
- Plans are in place for the recruitment of 2 Lay members in 2011/2012.

#### **1.4.5 To promote safeguarding for children in Bedford Borough**

- Bedford Borough Council has re-branded and updated all its leaflets including a review booklet for Looked After Children and a Guide to adoption for Children.

#### **1.4.6 To continue to develop the Bedford Borough Safeguarding Children Board functions and arrangements in line with the Local Safeguarding Children Board's extended role**

- Lay Member recruitment process underway

#### **1.4.7 To ensure that a comprehensive, set of multi-agency policies and practice guidance is available to all staff working with children across Bedford Borough.**

- The Interagency safeguarding procedures have been reviewed and amended to reflect the updated Working Together 2010 guidance - [http://www.proceduresonline.com/bedford\\_scb/](http://www.proceduresonline.com/bedford_scb/)
- The Interagency safeguarding procedures have been revised in partnership with Bedford Borough, Central Bedfordshire, Peterborough and Cambridgeshire Local Safeguarding Children Boards to enable consistent safeguarding procedures across Local Authorities' boundaries for practitioners.

- All the following documents have been agreed and signed off by Bedford Borough Safeguarding Children Board in 2010-2011:
  - Bedford Borough and Central Bedfordshire Safeguarding Children Boards' Protocol and Guidance: Working with sexually active young people.
  - Bedford Borough and Central Bedfordshire Safeguarding Children Boards' Procedures for managing allegations and concerns regarding staff, carers and volunteers working with children and young people.
  - Bedford Borough and Central Bedfordshire Private fostering procedure revised.
  - Bedford Borough, Central Bedfordshire, Luton Safeguarding Children Boards, Bedfordshire Domestic Abuse Partnership and Luton Community Safety Partnership Information Sharing Protocol.
  - Resolution of professional disagreements relating to the safeguarding of children and the escalation of professional concerns.
  - Bedford Borough, Central Bedfordshire and Luton Safeguarding Children Boards' Safeguarding Children and Young People from Sexual Exploitation Guidance.
  - Bedford Borough, Central Bedfordshire, Luton Safeguarding Children Boards' Jargon Buster – Sexual Abuse of Children and Young People.
  - Bedford Borough, Central Bedfordshire, Luton Safeguarding Children Boards' Multi-agency Protocol on Forced Marriage.
  - East of England Unaccompanied Asylum Seeking Children (UASC) Safeguarding Protocol.
  - Bedford Borough, Central Bedfordshire, Luton Safeguarding Children Boards' protocol for working with vulnerable families where one or both parents have mental health problems.
  - Bedford Borough and Central Bedfordshire Safeguarding Children Boards' Safeguarding Children abused through Domestic Abuse.
- Existing local protocols are under review to adopt single protocols across 3 Local Safeguarding Children Board areas
- Local protocols have been developed on all key issues of concern as specified (*Working Together 2010* Para 3.14)
- All approved protocols are disseminated across local distribution networks.

**1.4.8 To further develop the agreed performance framework to measure and report on Safeguarding performance.**

- Performance Management Information is in place
- Annual audit programme in place
- Audits have been undertaken in respect of the following recommendations from the Central Bedfordshire Child J Serious Case Review;
  - The Local Safeguarding Children Boards should, conduct a multi agency audit (using senior personnel from the key statutory agencies) of the decision making process and current threshold for convening Child Protection Conferences. A sample of recent decisions should be examined and a threshold which is acceptable to all agencies should be agreed.
  - The Local Safeguarding Children Boards should conduct a multi-agency audit to establish the extent to which written agreements with parents or carers are being used and whether the agreements are adequately contributing to keeping children safe. The audit should consider whether the agreements are workable, clearly expressed, being adequately monitored and whether the limitation of such

agreements and their enforceability are understood by all involved.

- The Local Safeguarding Children Boards should conduct a multi-agency audit to establish the extent to which strategy discussions/meetings were appropriately conducted through face to face meetings rather than over the telephone. There was evidence that Strategy Discussions under Section 47 Children Act 1989 had been inappropriately held over the telephone in Central Bedfordshire rather than this being the exception, that they often lacked key agency representation and that they frequently failed to involve managers from each agency. The Local Safeguarding Children Boards should write to constituent agencies and stress the importance that these meetings and/or discussions are conducted in accordance with Working Together to Safeguard Children 2010 and the recommendations in the Victoria Climbié Inquiry Report.

#### **1.4.9 To ensure the effectiveness and quality of the multi agency safeguarding training improves outcomes for children.**

- Dissemination of Current Awareness Service for Practice, Policy and Research ('CASPER') alerts from the National Society for the Prevention of Cruelty to Children (NSPCC) via Local Safeguarding Children Board networks
- An up to date Training Pathway is available on the Safeguarding Children Board Website and has been reviewed in light of the changes to Working Together 2010.
- Regular reports are presented to the Training Commissioning Group and the Training Development and Implementation Group which analyses evidence gained from training evaluation forms.
- A process exists to identify and respond to training needs identified by any of the Bedford Borough Safeguarding Children Board sub groups and this is a regular agenda item for the Training Commissioning Group.
- The Validation Panel has continued through the year and acts as a means of quality assurance for all safeguarding training. This is an ongoing process and monitored by the Safeguarding Children Board Training and Development Commissioning Manager and the Training and Development officer.

#### **1.4.10 To ensure that Serious Case Reviews are initiated appropriately and are timely, of good quality, and deliver maximum learning for all agencies**

- The Serious Case Review re Child J (Central Bedfordshire case) received a Good evaluation from Office for Standards in Education (Ofsted).and there have been no new Serious Case Reviews for Bedford Borough since its establishment as a Unitary Authority.
- A Serious Case Review briefing event was held on the 21 September 2010 and was attended by over 300 staff. Lessons learnt locally and nationally were woven into all the training delivered by the Local Safeguarding Children Boards where appropriate. This was accompanied by written case summaries being made available to all agencies to disseminate to their staff.
- The Local Safeguarding Children Boards Training team have been working on impactful training resources.
- Individual Management Review Authors Training was delivered in November 2010 to assist authors in learning the lessons from Serious Case Reviews here in Bedfordshire and Luton.

#### **1.4.11 To ensure safer recruitment practices across all agencies working with children in Bedford Borough**

The Bedford Borough Council Workforce Strategy sets out the priorities that support the development of the children and young people's workforce. In Bedford Borough Children's Trust, over the next three years the following priorities have been identified as the foundation for workforce development and reform for Bedford Borough's Children's Trust:

- To encourage people to join and remain in the children's workforce, offering clear career pathways.
- To ensure everyone working with children and young people within Bedford Borough understands their role within the 'One Children's Workforce'
- To support the development of the Bedford Borough Children's Trust workforce so that they are appropriately trained to be able to keep children and young people safe and in particular that they are able to give vulnerable children all the support they need.

The Bedford Borough Workforce Strategy is supported by a Children's Workforce Action Plan, which identifies key activities to support the implementation of the three strategic priorities and is critical to the effective delivery of the all the priorities in Bedford Borough's Children and Young People's Plan 2010 -2013.

1.5 The following challenges and issues were identified during 2010 – 2011 and will be taken forward into the Bedford Borough Safeguarding Children Board's Business Plan for 2011 - 2012;

- The recruitment and selection of 2 lay members.
- The development of a cross border training unit with Central Bedfordshire and Luton Safeguarding Children Boards.
- To ensure comprehensive dissemination of newly approved local protocols/procedures/practice guidance across Bedford Borough.
- To develop the impactful training materials following the Central Bedfordshire Child J Serious Case Review.
- To secure the engagement of all partner agencies in the allegations management procedures.
- How to meet the significant costs in establishing a single set of interagency safeguarding procedures and ongoing maintenance costs.
- Aligning local protocols to reflect different locality practice.
- Costs involved with implementing a review of current Local Safeguarding Children Board working arrangements.
- How to involve young people in the work of the Bedford Borough Safeguarding Children Board continues to be a challenge.

1.6 In addition are the following significant local issues on safeguarding for the Bedford Borough Safeguarding Children Board into 2011 - 2012;

- Pending Announced and Unannounced inspection of Children Services.
- The publication of the Munro Report and the implications for Local Safeguarding Children Boards and partner agencies.

## 2. Governance and accountability arrangements

2.1 In June 2010 the Strategic Board agreed and signed off the Bedford Borough Safeguarding Children Board's Constitution which covers the function, governance, accountability and membership of the Board.

2.2 The Bedford Borough Safeguarding Children Board is the decision making body for multi agency safeguarding activities within Bedford Borough. The work of the Bedford Borough Safeguarding Children Board fits within the wider context of all Children's Trust aims that are to improve the wellbeing of children in Bedford Borough in respect of the Every Child Matters Outcomes:

- Being Healthy
- Staying Safe
- Enjoying and Achieving
- Making a Positive Contribution
- Achieving Economic Wellbeing

2.3 The functions of the Bedford Borough Safeguarding Children Board are to generate more effective arrangements throughout Bedford Borough in:

- Protecting children and young people from maltreatment;
- Preventing impairment of children's and young people's health or development;
- Ensuring that children and young people are growing up in circumstances consistent with the provision of safe and effective care;
- Enabling children and young people to have optimum life chances on entering adulthood successfully, particularly in terms of being staying safe;
- Ensuring that lessons are learned from episodes including when a child or young person dies, or suffers serious harm, where maltreatment is considered to have been a contributory factor.
- Undertaking that role so as to enable those children to have optimum life chances and to enter adulthood successfully.

2.4 The Bedford Borough Safeguarding Children Board carried out its functions this year by continuing to develop policies and procedures for safeguarding and promoting the welfare of children in the area of the authority, including policies and procedures in relation to the following and consider the need for other local protocols for safeguarding and promoting the welfare of children in Bedford Borough in accordance with 'Working Together to Safeguard Children' (2010) paragraph 3.26:

- The action to be taken where there are concerns about a child's safety or welfare, including thresholds for intervention;
- Training of persons who work with children or in services affecting the safety and welfare of children;
- Recruitment and supervision of persons who work with children;
- Investigation of allegations concerning persons working with children;
- Safety and welfare of children who are privately fostered; and
- Co-operation with neighbouring children's services authorities and their Board partners.

2.5 Bedford Borough Safeguarding Children Board communicated throughout 2010/2011 to persons and bodies in Bedford Borough the need to safeguard and promote the welfare of children, raising their awareness of how this can best be done, and encouraging them to do so, through training, providing literature and guidance.

2.6 The Bedford Borough Safeguarding Children Board was formally consulted as part of the development and review of the Children and Young People's Plan for 2011 - 2013.

2.7 The Bedford Borough Safeguarding Children Board is chaired by the Laura Eades Independent Chair, who is accountable to Bedford Borough Council via the Executive Director for Children's Services, Schools and Families for the effectiveness of the work of the Safeguarding Children Board. The Performance of the Independent Chair has been reviewed by the Director for Children Services for Bedford Borough Council. The Independent Chair is a member of Bedford Borough's Children's Trust Board.

2.8 Each agency has designated named people as their Bedford Borough Safeguarding Children Board Strategic Board member(s) to ensure consistency and continuity in the membership of Bedford Borough Safeguarding Children Board Strategic Board. Members of Bedford Borough Safeguarding Children Board Strategic Board and named deputies have a strategic role within their agency in relation to safeguarding and promoting the welfare of children. They have the authority and experience within their agency to enable them to provide resources, commit their agency on matters of policy and practice, and hold their agency to account.

2.9 The Executive Director for Children's Services, Schools and Families for Bedford Borough Council, and the Lead Member for Children Services in Bedford Borough Council, are both members of the Bedford Borough Safeguarding Children Board Strategic Board and are fully engaged on the Board and its work.

2.10 The Bedford Borough Safeguarding Children Board is funded by the following agencies. This funding formula which includes a contribution from Central Bedfordshire funds the shared service business unit which supports both the Bedford Borough and the Central Bedfordshire Safeguarding Children Boards.

Bedford Borough Council	Central Bedfordshire Council	Bedfordshire Police	NHS Bedfordshire	Bedfordshire Probation	CAFCASS	Total
25.09% =£ <b>£55000</b>	25.09% = <b>£55000</b>	12.15% = <b>£26,634</b>	33.55% = <b>£73,549</b>	3.82% = <b>£8,378</b>	0.30% = <b>£550</b>	<b>£219,111</b>

### 3. Monitoring and evaluation/quality assurance activity

3.1 The **Strategic Board** in carrying out its functions has over the last year :-

- Overseen the governance arrangements of Bedford Borough Safeguarding Children Board;
- Set the strategic direction for Bedford Borough Safeguarding Children Board, taking account of any developments in national policy, practice and legislation through the then Department for Children, Schools and Families;
- Ratified and adopted the Annual Business Plan;
- Ratified the Annual Performance targets for the Joint Steering Group, and Sub Groups;
- Set the Annual Budget;
- Ratified the Business Plan and ensured its performance;
- Overseen the work of the Executive Serious Case Review Standing Panel and Child Death Overview Panel
- Ensured the planning and commissioning arrangements for all partner agencies takes into account safeguarding and the promotion of children's welfare;
- Ratified any amendments to the Bedford Borough Safeguarding Children Board Interagency Safeguarding Procedures; and
- Maintained links with relevant local partnerships in order to embed safeguarding procedures and principles within their constitution, policies and delivery plans.
- Reported to the Bedford Borough Children's Trust Board in relation to its performance.

3.2 The **Joint Steering Group** in carrying out its functions has over the last year :-

- Prepared, monitored and reviewed the annual budget and business plan for consideration by the Strategic Board.
- Prepared the Annual Report for consideration by the Strategic Board.
- Commissioned ad hoc task and finish groups to advance the objectives of the Bedford Borough Safeguarding Children Board Business Plan and to appoint Chairs for such groups and determine their terms of reference and timescales;
- Requested and received reports from sub groups;
- Approved policies and procedures.

- Responded to the Department for Children Schools and Families (DCSF) Consultations.
- During 2011 the Joint Steering group has developed a reporting schedule of reports in respect of the safeguarding activity of partner agencies. To date the following agencies have presented their reports:
  - Bedfordshire Community Health Service
  - South Essex Partnership Trust
  - Elective Home Education form Bedford Borough Council and Central Bedfordshire Council
  - Private Fostering (shared service)
  - Bedfordshire Youth Offending Service (shared service)

3.3 The **Joint Performance Management and Audit Group** in carrying out its functions has over the last year :-

- Developed and implemented an audit plan
- Responded to the recommendations from the Central Bedfordshire Child J Serious Case Review
- Agreed a Performance Information Framework
- Worked towards populating and analysing performance information reporting
- Undertaken Case File Audits
- Developed the lessons learnt from the case file audits

3.4 The **Joint Executive Serious Case Review Panel** in carrying out its functions has over the last year :-

- Ensured that the Executive Summary setting out the key findings of the Central Bedfordshire Child J Serious Case Review was available on the Local Safeguarding Children Board's website
- Ensured that the action plan arising from the findings of the review has been closely monitored by the Executive Serious Case Review Panel and that the Bedford Borough Safeguarding Children Board is able to demonstrate that all of the recommendations have been implemented by April 2011.
- Ensured that member agencies can show that the implementation of recommendations has made services more effective and improved outcomes for children.
- Ensured that single and multi-agency audits have shown that action plans have been implemented. However, these will be reviewed by the Board during 2011 to consider their effectiveness – that is, have these action plans made a difference.
- Shared recommendations with the National Safeguarding Delivery Unit set up by the previous government. Its work plan will be reallocated to new safeguarding priorities, including Professor Eileen Munro's review.

3.5 The **Joint Policy and Procedures Group** in carrying out its functions has over the last year :-

- Ensured all documents revised or developed this year have taken into account legislative requirements and guidance concerning safeguarding.
- Ensured all lessons learned from Serious Case Reviews have been incorporated into policy and guidance.
- Ensured that Bedford Borough Safeguarding Children Board is working closely with Central Bedfordshire Safeguarding Children Board and Luton Safeguarding Children Board in developing specific cross agency/border processes.
- Identified when policies require renewing and ensured policies and procedures are kept up to date.
- Signed off policies and disseminated via the Joint Steering Group and shared with the Strategic Board.

3.6 The **Joint Training Commissioning Group** in carrying out its functions has over the last year :-

- Redrafted the Training Strategy to address the priorities of the Bedford Borough Safeguarding Children Board.
- Implemented and planned further relevant training in light of the Central Bedfordshire Child J Serious Case Review and raising awareness of the Child Death Overview Panel.
- Monitored the quality and robustness of systems to ensure consistent quality training via reports from the Training Commissioning Manager.
- Ensured the Bedford Borough Safeguarding Children Board's programme can evidence through the evaluation process that all agencies attending the courses, and work with children and young people, are made fully aware of their safeguarding responsibilities.
- Raised the profile of safeguarding across Bedford Borough through courses and programmes.
- Ensured the Training and Development Commissioning Manager worked closely with the Bedford Borough Workforce Development group to ensure the workforce receive adequate training to enable all to be pro-active with regard to safeguarding.
- Ensured agencies contribute to the Local Safeguarding Children Board's training fund according to individual need.
- Received reports from the Training and Development Commissioning Manager on the development, delivery and quality of the Bedford Borough Safeguarding Children Board's training programme
- Commissioned training based on need and evidence of its effectiveness.
- Ensured national and local developments are incorporated into the training remit.
- Reported back to Bedford Borough Safeguarding Children Board on spend and outcomes achieved.

3.7 The **Joint Training and Development and Implementation Group** in carrying out its functions has over the last year :-

- Developed and delivered a training programme in partnership with the Joint Training Commissioning Group based on national requirements and local needs including findings from Serious Case Reviews, Internal Reviews, local audits, new policies and any complaints that may inform the programme
- Continued to link the Local Safeguarding Children Boards' training provision with single agency child protection/safeguarding training provision and identified any opportunities for increasing interagency training.
- Ensured the provision of high quality multi-agency training and staff development opportunities.

- Included national and local statistics in the training programme.
- Continued to identify and support members who join/remain in the training pool.
- Received reports from the Training and Development Officer and Training and Development Commissioning Manager about the development and delivery of the new programme.
- Monitored the quality of training provision working in partnership with the Training and Development Officer and Training and Development Commissioning Manager at the Validation panels.
- Regularly reported to the Joint Training Commissioning Group on training needs, provision and quality via the Training and Development Commissioning Manager.
- Developed and supported a pool of facilitators in the delivery of the local inter-agency practice groups.
- Obtained regular updates from pool trainer members.

## 4. Progress on priority policy areas

### 4.1 Bedford Borough Council

In 2010/11 Bedford Borough Council has undertaken a higher proportion of Section 47 Investigations per ten thousand population compared to the 2009/10 national and statistical neighbour averages. This was also translated into a higher proportion of initial Child Care Protection Conferences and numbers of children subject to Child Protection Plans. There was a 21% increase in Section 47 Investigations compared to 2009/10, a 28% increase in initial Child Care Protection Conferences and a 41% increase in children subject to Child Protection Plans.

There has been a change from 2009/10 to 2010/11 in relation to the duration of plans. Most of the increases are new plans and therefore children who have been subject to plan for less than six months. Those subject to a plan between six months and a year are below the statistical neighbour and England averages. Those subject to a plan for over one year are significantly lower than the averages. In 2010-2011 we achieved a 100% performance for reviewing child protection plans within timescale.

Having undertaken this analysis Bedford Borough Council applied to the Regional Improvement and Efficiency Partnership for funding to explore the factors influencing the increased child protection activity. This application was successful and the work on that analysis will start in September 2011. This work is being commissioned from the Audit Commission.

During the year Bedford Borough Council has developed a Risk and Resilience Assessment Tool to assist professionals in their decision making in the application of safeguarding thresholds. During 2011/2012 Bedford Borough Council will monitor the impact of this on child protection activity.

- Following this work Bedford Borough Council has also developed an adapted model to assist professionals in assessing Vulnerability and

Resilience. This is a core part of refreshing the Common Assessment Framework which was an area highlighted for improvement in the 2010 Unannounced Office for Standards in Education (Ofsted) inspections. An Integrated Working Group prepared plans for significant changes to reclaim to the Common Assessment Framework as an assessment tool and move away from its historical use as a referral form. This involved reviewing the function of the Multi Agency Allocation Group (MAAG) and developing proposals to utilise the professional expertise provided to that group as a Multi Agency Case Clinic. The change will be implemented in the autumn of 2011.

During 2010-2011 Bedford Borough Leisure and Library services delivered in house safeguarding training to all staff involved with the public. The 'Safeguarding Is Everybody's Business' poster was modified for these service areas and is displayed in public Library and Leisure Centre bases.

During 2010 Office for Standards in Education (Ofsted) undertook an Unannounced Inspection of the Contract Referral Assessment Service and identified no priority actions they found:-

- All referrals are allocated and managed promptly.
- There were no unallocated cases in the referral and assessment team and there had been none for a substantial period of time.
- Children were seen alone during assessments where appropriate and their views were taken into account.
- Strategy discussions and initial child protection conferences were timely and appropriately involved partner agencies.
- All child protection investigations are allocated to qualified and experienced social workers.

During the year Bedford Borough Council developed outline proposals to consider the development of a Multi Agency Safeguarding Hub. These were discussed with the Police and a joint visit was made with the Police to see a model in operation in Devon. Bedford Borough Council was successful in obtaining funding from the Regional Improvement and Efficiency Partnership to develop a business model case for this and further work jointly with the Police to test out the viability of this proposal in 2011/12.

All regulated services that were inspected by Office for Standards in Education (Ofsted) in the year received a positive inspection and no safeguarding issues were identified. Also Bedfordshire Youth Offending Service (BYOS) has achieved a significant improvement in reducing the numbers of first time entrants going into custody.

During the year Bedford Borough Council identified a complex case involving a significant number of young people across local authority boundaries where there were continued child protection concerns. Bedford Borough Council commissioned a number of complex strategy meetings and a Strategic Overview Meeting which was chaired by the Independent Chair of the Bedford Borough Safeguarding Children Board to bring together three local authorities and other agencies including Mental Health Services, Schools, Probation and the Police to ensure a coordinated approach.

Bedford Borough Council has maintained fully staffed Social Work Teams and Conference and Review Service throughout the year and despite budget pressures the Council prioritised funding to ensure agency cover throughout the year for any vacancies.

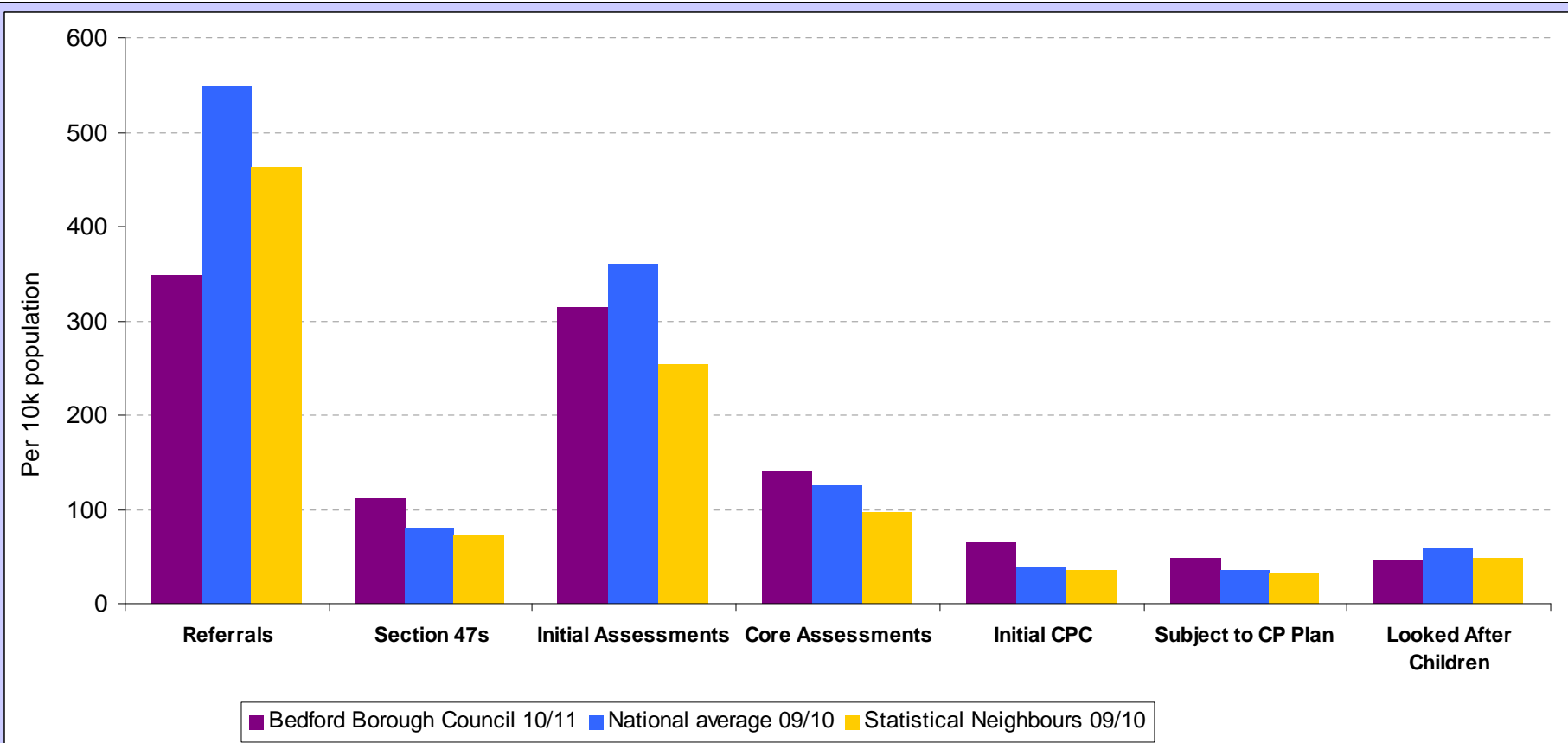
Through the year Bedford Borough Council Officers have reported performance data on a regular basis to the Bedford Borough Performance Clinic and also the Policy Review and Development Committee of the Borough Council. The independent Chair of Bedford Borough Safeguarding Children Board reported the 2009/10 Annual Report to that Committee.

Bedford Borough Council has established positive links with the Adult Safeguarding Board, with an Assistant Director of Adult Services being a member of the Bedford Borough Safeguarding Children Board Strategic Board and the Assistant Director for Children's Services, Schools and Families sitting on the Adult Safeguarding Board.

Bedford Borough Council has continued to strengthen the safeguarding within schools. Bedford Borough Council established a new post of Education Safeguarding Adviser which will provide a targeted support to schools within the Borough regardless of their status.

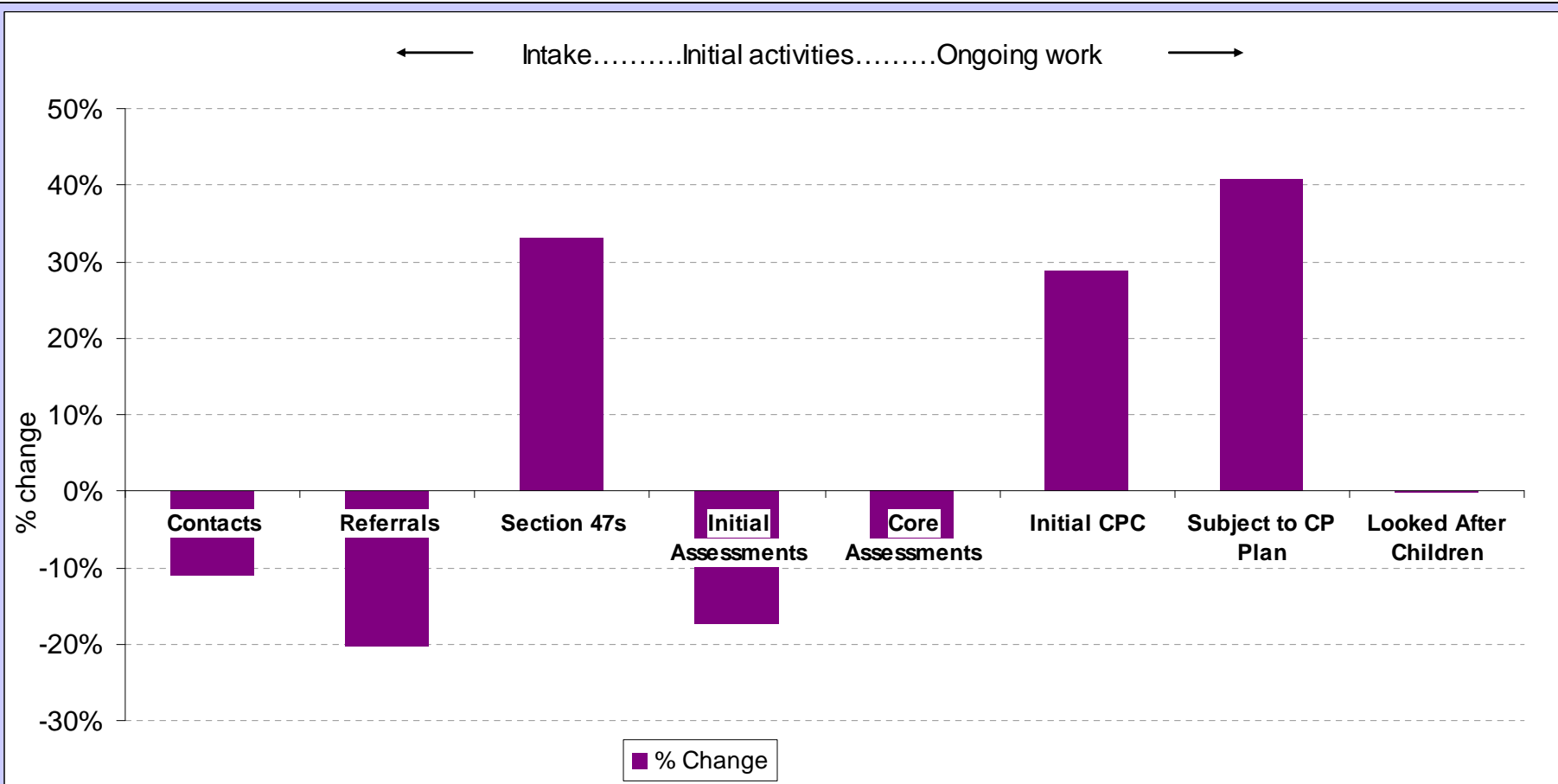
**Bedford Borough activity 2010/11 against National and Statistical Neighbour averages 2009/10**

<i>Type of Activity</i>	Bedford Borough Council 10/11	National average 09/10	Statistical Neighbours 09/10
Referrals	348	548	462
Section 47s	112.5	79.6	70.7
Initial Assessments	313.9	359	253
Core Assessments	141.8	125	97.3
Initial Child Protection Conference	64.8	39.1	34.5
Subject to Child Protection Plan	46.9	35.5	31.1
Looked After Children	46.3	58.5	47.5



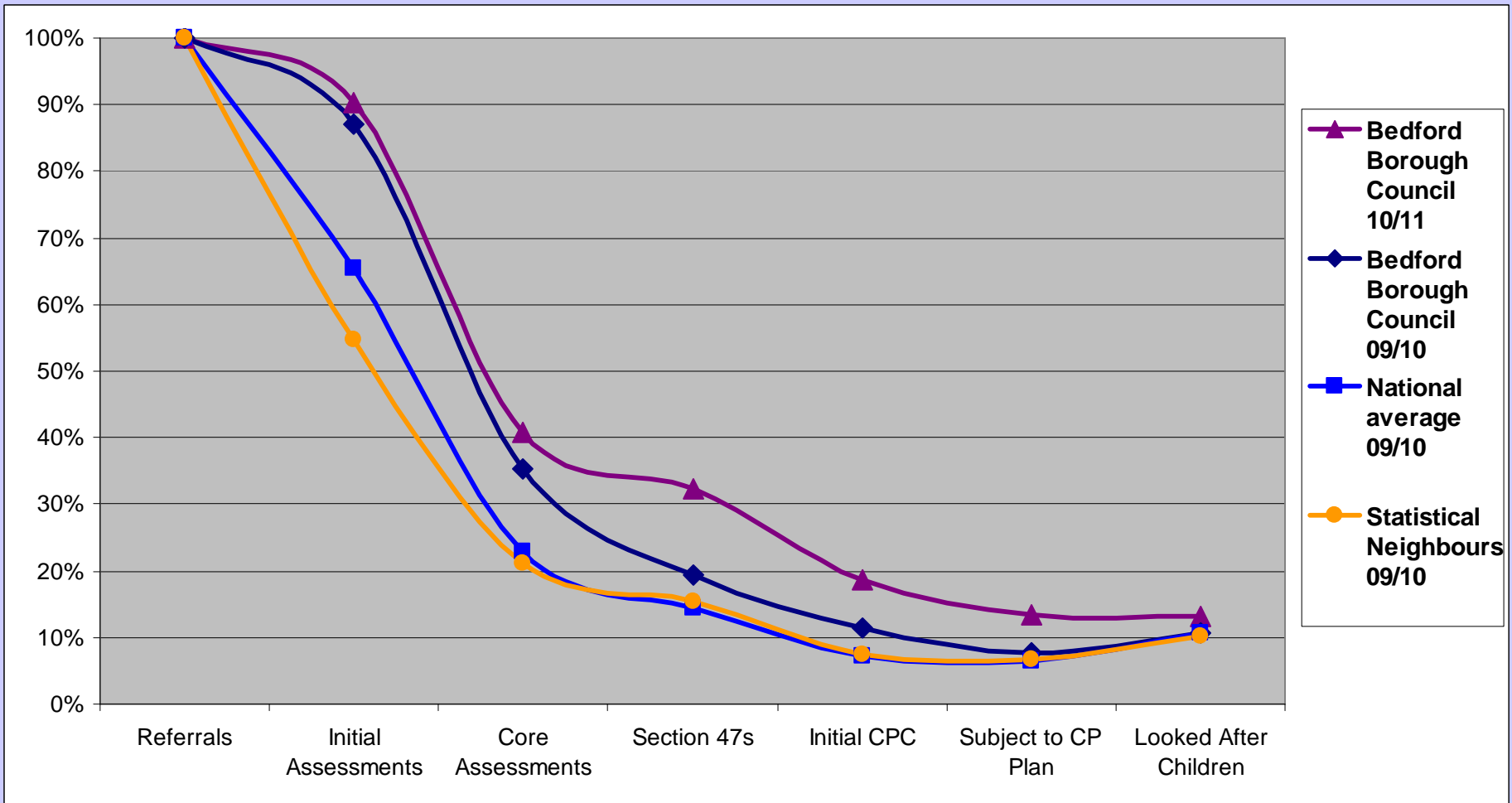
**Bedford Borough activity 2009/10 v 2010/11 (% Change in Activity)**

<i>Type of Activity</i>	Bedford Borough Council 09/10	Bedford Borough Council 10/11	% Change
Contacts	1721	1533	-10.9%
Referrals	436.5	348	-20.3%
Section 47s	84.6	112.5	33.0%
Initial Assessments	379.8	313.9	-17.4%
Core Assessments	154.4	141.8	-8.2%
Initial Child Protection Conference	50.3	64.8	28.8%
Subject to Child Protection Plan	33.3	46.9	40.8%
Looked After Children	46.4	46.3	-0.2%



**Bedford Borough activity 2010/11 against National and Statistical Neighbour averages 2009/10 (as a Percentage of Referrals)**

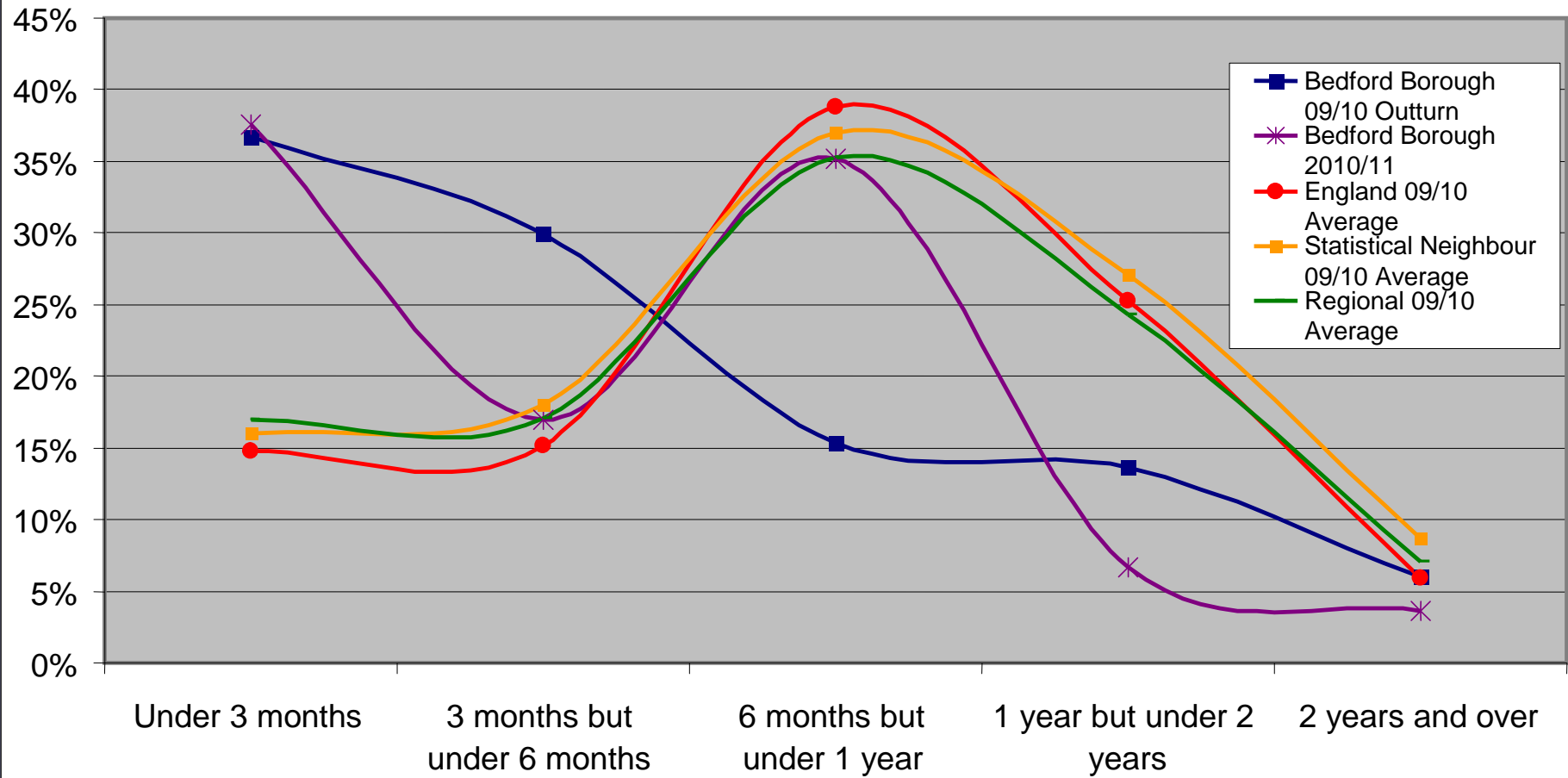
<i>Type of Activity</i>	Bedford Borough Council 10/11	Bedford Borough Council 09/10	National average 09/10	Statistical Neighbours 09/10
Referrals	100%	100%	100%	100%
Initial Assessments	90%	87%	66%	55%
Core Assessments	41%	35%	23%	21%
Section 47s	32%	19%	15%	15%
Initial Child Protection Conference	19%	12%	7%	7%
Subject to Child Protection Plan	13%	8%	6%	7%
Looked After Children	13%	11%	11%	10%



### Number of children subject of a Child Protection Plan by duration of plan

Duration of Child Protection Plan	Bedford Borough 09/10 Outturn	Bedford Borough 2010/11	Bedford Borough 09/10 Outturn	Bedford Borough 2010/11	England 09/10 Average	Statistical Neighbour 09/10 Average	Regional 09/10 Average
Under 3 months	43	62	37%	38%	15%	16%	17%
3 months but under 6 months	35	28	30%	17%	15%	18%	17%
6 months but under 1 year	18	58	15%	35%	39%	37%	35%
1 year but under 2 years	16	11	14%	7%	25%	27%	24%
2 years and over	7	6	6%	4%	6%	9%	7%
<b>Total</b>	<b>119</b>	<b>165</b>					

**Children subject of a Child Protection Plan by duration of plan (%)**



## 4.2 Local Safeguarding Children Boards Training

The Local Safeguarding Children Boards' training function serves both the Bedford Borough and Central Bedfordshire Safeguarding Children Boards through the shared service arrangement and has delivered over 60 days of face to face multi agency training to over 900 delegates from Bedford Borough Safeguarding Children Board partner agencies and voluntary organisations in the last year.

The Local Safeguarding Children Boards' shared service training function is the sole provider of multi agency safeguarding training in Bedford Borough. The Training function has recently begun to conduct 'Follow Up' telephone evaluation with delegates at 6-8 weeks after attending a 1 day 'Domestic Violence and the Impact on the Child' Local Safeguarding Children Boards' training course and early indications are that this course has had a positive impact on worker knowledge and skills and indirectly the children and young people they are working with.

Comments at 6 weeks after course date included a sustained and improved awareness:

of young people's offending behaviour
of need to offer improved support in school
and helped to identify areas for support to children

Comments made at the end of the course by delegates attending this course and other courses regularly highlight the ways in which our training has helped them to develop their safeguarding knowledge. This method of evaluation will be rolled out across all courses over the coming two years.

**Safeguarding policy and priorities in the Children and Young People's Plan-** Tri annual Multi Agency Risk Assessment Conference Awareness Briefings for all staff and volunteers was co-ordinated and hosted by the two Local Safeguarding Children Boards this is to continue into 2011-12. The two Local Safeguarding Children Boards delivered four multi agency one day 'Domestic Violence and the Impact on the Child' courses this is to continue into 2011-12. The two Local Safeguarding Children Boards hosted and co-ordinated two half day multi agency Briefing events as part of learning the lessons from the Central Bedfordshire Serious Case Review of Child J; two further half day Briefings are planned for June 2011 addressing the issue of 'Grooming of professionals and Offender management themes'.

**Safeguarding in schools** - Whole school training package for delivery to Bedford Borough schools was validated by the two Local Safeguarding Children Boards in February 2011; Designated Personnel training package used with Bedford Borough school staff validated by the two Local Safeguarding Children Boards in February 2011.

**Safer workforce** – The Local Safeguarding Children Boards delivered three multi-agency one day 'Safer Recruitment for Managers' courses. This is

to continue into 2011-12

**Domestic Abuse/ Adult Mental Health/ Learning Difficulties and Disabilities/ Drugs and Alcohol – The** Local Safeguarding Children Boards shared training delivery unit has delivered three one day 'Impact of Domestic Abuse on the Child' courses; four two day 'Impact of Parental Illness on Parenting Capacity' courses during 2011-12; a half day awareness course on Parental Substance misuse in development for 2011-12; and a one day course 'safeguarding Children with Disabilities' course in development.

**Private fostering** - Awareness materials and resources are presented by the Fostering Manager on all two day Safeguarding Children and Inter Agency Working courses.

**Engagement of the wider community in safeguarding, e.g. Voluntary Organisations for children young people and families, faith groups -** 157 days training have been delivered to the Voluntary and Faith sector at no charge. Some delegates have attended more than one course. This involvement is set to continue for 2011-12.

Planning is at an early stage to consider the ways in which Looked After Children who are care leavers and parents/carers of children with disabilities may become involved in course planning, development and delivery.

### **4.3 Bedfordshire Probation**

In 2009, Bedfordshire Probation Trust was inspected by Her Majesty's Inspectorate of Probation. Some areas for improvement were identified in relation to Safeguarding Children as a result of which actions were included in an improvement plan implemented during 2010/11. All relevant actions have now been completed. These included having named Safeguarding leads within each of our Local Delivery Units - the Bedford/Central Bedfordshire Local Delivery Unit lead represents the Trust on the Joint Steering Group, acts as a link back to the Local Delivery Unit and is the first point of contact if there are Safeguarding Children issues that require escalation.

The Trust also produced a 'Core Brief' for Probation staff on 7 Key Principles in Safeguarding Children, these being

1. Share information
2. Escalate concerns
3. Take responsibility
4. Think child
5. Make accurate records
6. Consult
7. Use guidance.

The brief makes specific reference to the importance of Probation staff considering the impact of parental behaviour such as substance misuse and domestic abuse on children. The key principles will frame our auditing of Safeguarding Children practices going forward. Bedfordshire Probation Trust has continued to ensure that their staff receive an appropriate level of Safeguarding Children training, including refresher training.

#### **4.4 Bedfordshire Police**

During the past year Bedfordshire Police has appointed a lead for Safeguarding, namely an Assistant Chief Constable who now chairs a Force Child and Young People's Strategic Group that is responsible for coordinating and providing strategic direction of all services provided by Bedfordshire Police to Children and Young People. A Children and Young People Tactical Group chaired by the Detective Superintendent of the Public Protection Team who is responsible for the implementation of decisions made at the Strategic Group. The success of this group has been to coordinate the work carried out by the Safer Neighbourhood Policing Teams and the work carried out by the Public Protection Unit.

##### **2010 - 11 Successes**

A business case was approved by both the Chief Constable and the Police Authority for an increase in 14 staff for the Public Protection Unit. These additional staff included 4 Sergeants. The additional staff have been placed in the child and domestic abuse teams, the sex offender management team, rape investigation and 2 Constables have formed a new team targeting Honour Based Abuse.

The sex offender management team workloads have now come down to the National average, the rape investigation team has been restructured and aligned to the Safeguarding Teams and the service provided to victims of Honour Based Abuse is seen as best practice nationally. Bedfordshire Police has taken out more Forced Marriage Protection Orders than any other Force, even more than the large Metropolitan Forces.

On case was heard by Sir Nicholas Wall (President of the Family court) at the Royal Courts of Justice in London, he commended the approach taken by Bedfordshire Police and stated the case should be seen as a model for others to follow.

During the summer of 2010 a business plan was approved by the Force Executive for the expansion of the Missing Person Team. The team has now grown from 2 Police Constables to a Sergeant and 6 Police Constables (in addition to the extra 14 officers). This has bolstered our ability to deal in a timely fashion to all children and young people who go missing. The team have reduced the number of children and young people going missing by over 30%.

##### **Work for 2011 - 12**

The major issue to be dealt with by Bedfordshire Police is to maintain or improve services over the next 4 years whilst reducing the budget by 20%. The Force is currently in the process of restructuring. The Public protection Unit will lose 25 officers however 20 posts will be civilianised resulting in a

loss of 5 posts. The main area of work affected by this loss of staff numbers is in Domestic Abuse. There will a change of process for Domestic Abuse where work traditionally undertaken by the Public Protection Unit will be undertaken by First Response Officers and Safer Neighbourhood Policing Officers. This means that Bedfordshire Police will see a reduction of 20% in our budget but the work of the Public Protection unit will remain largely untouched. The loss of officers and the introduction of civilian support staff will in fact provide the Public Protection Unit with the opportunity to further professionalise and enhance the services provided.

#### **4.5 Child Death Overview Panel**

The statutory Child Death Overview Process (CDOP) is now well established across the county. The aim of this process is to review all child deaths between 0-18 years with a particular focus on unexpected child deaths with a view to identifying themes and public health messages to prevent similar deaths in the future and also to ensure there are no safeguarding issues and the case does not fit the criteria for a Serious Case Review. The panel meets on a regular basis with meetings being very well attended by a range of professionals from all agencies including Health, Social Care, Public Health and the Police.

The Rapid Response/Information Sharing meeting that is required to take place following the unexpected death of a child has become embedded in the process and usually takes place within 48 hours of the death being notified to Child Death Overview Panel. The manager for Child Death Overview Panel coordinates this meeting ensuring all practitioners involved with the child and family attend. The purpose of the meeting is to share information which led to the child's death, to ensure there are no safeguarding concerns for other children in the family and to establish who will support the family following the death.

#### **Number of deaths in Bedford Borough**

During the period 1 April 2010 to 31 March 2011 a total of 63 child deaths were reported to the Bedfordshire and Luton Child Death Overview Panel. This is a decrease of just over 11% on the previous year's figures. 16 of the deaths were of children living in Bedford Borough. This represents an increase of 5 deaths on last year's figures. Further detailed analysis of the data will be available in the Annual Report for 2010-2011

#### **Meetings held and reviews conducted 2010-2011**

The Bedfordshire and Luton Child Death Overview Panel has met 7 times in the period 1 April 2010 to 31 March 2011. On each occasion the panel has been quorate. In addition there have been 2 further sub group meetings with the neonatal and midwifery teams at the Luton and Dunstable Hospital to discuss the large number of neonatal deaths reported.

In total the Child Death Overview Panel has reviewed and closed 69 cases some of which are from the previous year's cases.

5 of the 16 cases reported in Bedford Borough during 2010-2011 have been reviewed and closed as well as 5 outstanding cases from 2009-2010 and 2 cases from 2008-2009.

The panel has to consider if they have identified any factors, which may have contributed to the death of the child and which, by means of locally or nationally achievable interventions, could be modified to reduce the risk of future child deaths. Some identifiable factors have included maternal smoking, raised maternal Body Mass Index (BMI), drug misuse and consanguinity. Again further detailed analysis will be available in the annual report.

The Child Death Overview Panel Terms of Reference and Procedures have been reviewed and are available on the Local Safeguarding Children Board's website.

Funding has been agreed across the county from local authorities and National Health Service Commissioners to fund the Child Death Overview Panel process for 2011-2012.

The annual report will be presented to Bedford Borough Safeguarding Children Board during the latter part of 2011.

#### **4.6 Bedfordshire Community Health Service**

Bedfordshire Community Health Service (BCHS) provides a range of community health services. These include adult and children's community nursing; intermediate care; therapies; dentistry; drug and alcohol services; nursing services within Her Majesty's Prison (HMP) Bedford and community bedded units in Biggleswade and Bedford. These services are provided to the populations of the unitary authorities of Central Bedfordshire Council and Bedford Borough Council, some of the service provision also includes Luton.

The year April 2010-2011 has been an extremely active period with focus on organisational change and national targets. This has resulted in a number of competing priorities. Bedfordshire Community Health Service has continued to place a high priority on safeguarding children and it is embedded throughout the organisation at all levels via a robust governance structure, reporting and audit. This will continue during the period of transition to our new acquirer.

Bedfordshire Community Health Service has refreshed its public declaration of its commitment to safeguarding children, giving Bedfordshire Community Health Service Board assurance that it has robust systems in place to protect and promote the welfare of children. (Compliance with David Nicholson letter June 2009).

Bedfordshire Community Health Service Safeguarding Children Policy and Guidance has been reviewed following publication of revised Working Together 2010.

Bedfordshire Community Health Service Safeguarding Training Strategy and Training Matrix reflects Bedfordshire Community Health Service mandatory training requirements, in line with Inter Collegiate Document 2010. Work is currently being undertaken to assess and monitor appropriate level of competencies as indicated in the former document.

Current training data reflects that:

97% of staff completed level 1

58% of staff completed level 2

72% of staff completed level 3/4

Bedfordshire Community Health Service has a clear line of accountability within the organisation for work on safeguarding children. Bedfordshire Community Health Service has a designated team of safeguarding professionals including designated Looked after Children's Nurse. Bedfordshire Community Health Service safeguarding children and vulnerable adult professionals, work alongside each other at an operational level, with leadership from a Head of Service, reporting to the Lead Nurse and Bedfordshire Community Health Service Committee via a combined governance group. This governance structure affords sharing of good practice and lessons learnt to inform and influence daily practice.

Bedfordshire Community Health Service works in collaboration with the local authorities in management of pathways to facilitate access to appropriate health care and statutory health assessments for Looked after Children. This service is currently under review as part of a multi agency forum to ensure compliance with statutory guidance, 'Promoting the Health and Well-being of Looked after Children 2009'.

Last year's Intensive Support Visit from the Strategic Health Authority highlighted a concern with respect to a lack of information in place for Looked After Children, resulting in a recommendation to check compliance with statutory guidance.

The recent review has identified a number of issues which need to be addressed to ensure full compliance with the statutory recommendations and this service has been given high priority and is being managed through the implementation of a multi agency action plan.

Bedfordshire Community Health Service 0-19 Team service is now fully aligned to geographical areas, affording increased partnership working across disciplines and agencies via Children's Centres. This service has a focus of early intervention and prevention, with the provision providing universal services and progressive intervention, by taking the lead on implementing the Healthy Child Programme.

Locality Managers and Team Leads are now established posts, which have firmed up monitoring of safeguarding activities, support and development of frontline professionals. Professionals from this service are required to have a higher knowledge and competences based skills with respect to

safeguarding children.

Bedfordshire Community Health Service continues to participate in multi agency safeguarding children forums/conferences, including Multi Agency Risk Assessment Conferences with respect to management of high risk domestic abuse incidents. Bedfordshire Community Health Service uses information provide by Bedfordshire's Child Death Overview Panel (CDOP) to influence practice. For example this year Bedfordshire Community Health Service has supported Child Death Overview Panel action with respect to identified risk of babies/young children sleeping positions in car seats, by ensuring that all new parents are made aware of the potential risk and steps they should take to mitigate this risk.

During the course of the year Bedfordshire Community Health Service has acknowledged that areas of development are required with respect to quality of referrals and reports as part of safeguarding processes. Work in progress includes training in relation to the use of chronologies to identify needs/risk and inform referrals and reports.

As a result of internal audit and serious case review recommendations, Bedfordshire Community Health Service has implemented a new safeguarding supervision model. This model challenges 'fixed thinking' using the principles of a 'fresh pair of eyes' and 'playing devil's advocate'. The model has been implemented within the 0-19 Team Service, as a pilot, to be audited with a plan to role out to other Bedfordshire Community Health Service children's service teams.

Bedfordshire Community Health Service audit programme has included audits with respect to growth monitoring and 0-19 Team support staff process/documentation. These audits have resulted in firming up the process and recording of work undertaken by support staff within these teams ensuring that they are better informed in relation to the families that they are working with. A review of the policy/guidance regarding growth monitoring is currently being undertaken to support staff to ensure accurate recording and analysis to inform referrals and reports. These practice based issues are important elements to inform safeguarding processes and focus on outcomes for children.

### **Conclusion**

The above report gives a brief account of Bedfordshire Community Health Service commitment and activities to ensure that the focus of promoting the welfare and protection of children remains high on the agenda and reflects that Bedfordshire Community Health Service continues to provide a quality of service which strives to improve outcomes for children and young people.

### **4.7 The Voluntary Organisations for Children, young people and families (VOCyfp)**

Voluntary Organisations for Children, young people and families has a good relationship with the Bedford Borough Safeguarding Children Board. The sector benefits from free of charge training which has continued again in 2010 – 2011 indicating the commitment of Bedford Borough and their statutory partners in supporting the sector to fully engage in the safeguarding agenda and sustain the high level of professionalism in the sector. This

has been heralded as a model of good practice in the region and the sector would like to formally thank partners for their support.

The sector has been actively promoting the E learning package, It is suitable for the wide range of organisations that make up the voluntary sector, from the faith and community groups who need a basic introduction to Safeguarding through to the larger commissioned agencies who use it as part of their induction process.

This year the Voluntary Organisations for Children, young people and families Officer attended a number of the Local Safeguarding Children Boards sub groups, sat on the Training Validation Panel and promoted all the Local Safeguarding Children Boards training opportunities and protocols through the website.

Case study:

This year the Voluntary Organisations for Children, young people and families joined forces with Community Voluntary Service Mid and North Beds to run a **Fit 4 Safeguarding** pilot. These taster sessions were aimed at grassroots and faith groups who work with children and young people and/or vulnerable adults. Participants had to complete the Local Safeguarding Children Board E learning foundation module as an entry requirement and worked through the Safe Network (Children England and National Society for the Prevention of Cruelty to Children - NSPCC) resource pack during the sessions, highlighting practical ways of making sure safeguarding policy and procedure are understood by all in their project.

The **Fit 4 Safeguarding** sessions were attended by 31 groups from across Bedford Borough and Central Bedfordshire, 26 of them working with children and young people. The evaluations were positive and constructive. Many of the groups already have a policy and a named person, but struggle to find a way to make this easily accessible to staff, volunteers and others. In addition, 7 groups attended a further taster session for black and minority ethnic groups.

In 2011, Voluntary Organisations for Children, young people and families, plans to promote the Safe Network national safeguarding standards to groups across Bedfordshire, the Voluntary Organisations for Children, young people and families Officer has taken on the role of Safe Network Champion for Bedfordshire.

#### **4.8 National Health Service (NHS) Bedfordshire**

National Health Service (NHS) Bedfordshire commissions a range of health services from a range of providers, and has the responsibility for ensuring that the health contribution to safeguarding and promoting the welfare of children is discharged effectively across the whole local economy through its commissioning arrangements. Clinical governance arrangements are in place to monitor safeguarding arrangements with provider organisations. This is led by the Executive Nurse Director and the Designated Nurse for Safeguarding Children and Young People.

The year 2010/11 has been a very busy time for National Health Service (NHS) Bedfordshire, with a particular focus on a number of changes both nationally and locally. However, during this period of significant change, the core purpose remains the delivery of improved quality for patients by improving safety, effectiveness and patient experience.

It is anticipated that 2011/12 will be an equally demanding year for the National Health Service (NHS) as it takes on the challenge of continuing to deliver high quality care for patients, while beginning in earnest the transition to the new system envisaged in *Equity and Excellence: Liberating the National Health Service (NHS)*. The over-arching goal in this period is to build strong foundations at local level for the new system by maintaining and improving quality, by keeping tight financial control and delivering on the quality and productivity challenge and by creating energy and momentum for transition and reform.

The National Health Service (NHS) Operating Framework sets out the national priorities for 2011/12 which will continue to develop in anticipation of the new role of the National Health Service (NHS) Commissioning Board in driving quality improvement across the system.

It is critical that, as commissioners, National Health Service (NHS) Bedfordshire maintains clear accountability arrangements during 2011/12, even as parts of the new system come into place in shadow form. In order to secure the capacity and flexibility needed for the transition period, National Health Service (NHS) Bedfordshire and National Health Service (NHS) Luton have formed a cluster Primary Care Trust (PCT). This offers capacity to the emerging General Practitioner consortia and addresses the broader drive to reduce running costs across the region. The development of a shadow General Practitioner consortium for Bedfordshire is continuing to progress.

#### **Intensive Support Team visits from the Strategic Health Authority.**

In the Annual Review 2009/10, National Health Service (NHS) Bedfordshire reported a two day intensive support visit from the Strategic Health Authority (SHA) and reported a positive verbal feedback whilst waiting for the written detailed report.

The report was received in August 2010, and included 8 advisory recommendations for National Health Service (NHS) Bedfordshire and partner organisations. There are 2 outstanding recommendations which are currently being addressed. The action plan has been shared with the Local Safeguarding Children Boards. National Health Service (NHS) Bedfordshire has undertaken a review of Looked After Children (LAC) Services and arrangements with partner agencies. National Health Service (NHS) Bedfordshire is also reviewing provision of services across Bedfordshire and Luton for children who have been subjected to sexual abuse.

#### **Conclusion**

To this end, this National Health Service (NHS) Operating Framework sets out how the National Health Service (NHS) will maintain tight financial control during 2011/12. These measures will no doubt create real challenges in some parts of the system, but they are critical to ensuring maintaining

a strong financial position to get the new system on the right footing from the outset.

#### **4.9 South Essex Partnership Trust (SEPT)**

##### **Governance Arrangements - Trust Safeguarding Team**

The Trust has recently expanded the Safeguarding Team with the appointment of an Associate Director of Safeguarding demonstrating the Trusts continued commitment to the Safeguarding agenda as seen below in table 1. The Trust Safeguarding Team reports to

- |                                   |           |
|-----------------------------------|-----------|
| • Safeguarding Group              | Monthly   |
| • Clinical Governance Committee   | Quarterly |
| • Executive Team                  | Monthly   |
| • Trust Board                     | Annually  |
| • Trust Board Serious Case Review | Annually  |

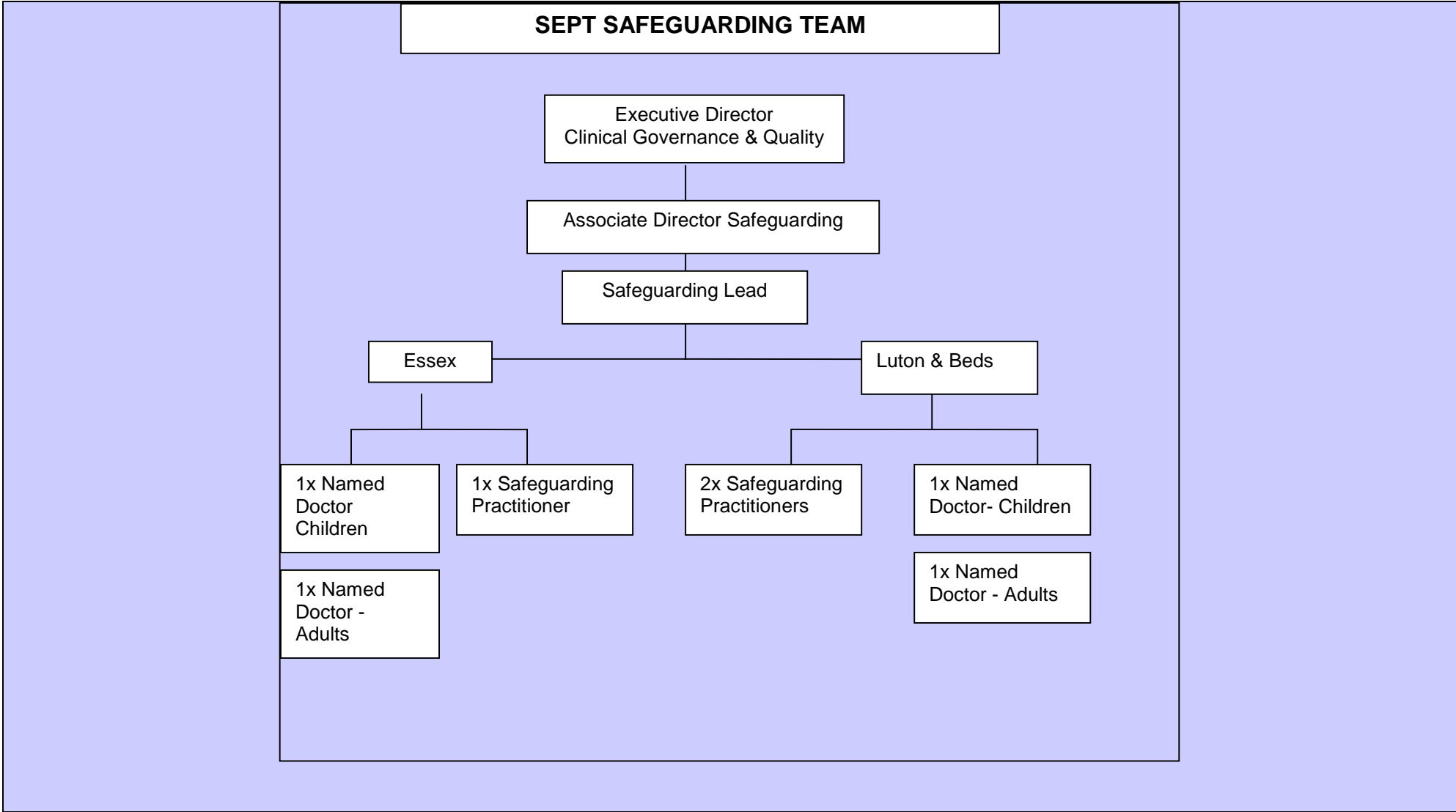
A number of ad hoc reports are provided on request.

##### **Safeguarding Group**

The Trust Safeguarding Group is chaired by the Executive Director of Clinical Governance and Quality. Membership has increased this year to include Associate Directors, Doctors and senior staff representing all Trust clinical services. The group has increased the frequency of meetings which are now held monthly in order to address the growing requirements of the Safeguarding agenda.

All reports, policies and protocols, are tabled at meetings before being presented to the Trust Executive Team or Board. An action plan containing national, local and Trust directives is reviewed at each meeting to ensure compliance.

The Bedford Borough Safeguarding Children Board reports are a routine agenda item and discussed at these meetings.



### **Policy and Procedures**

The Trust has integrated Safeguarding policies for Children and this has been ratified by the Trust Board. The Policies reflect national and local guidance and contain a number of new requirements that comply with Working Together 2010, National Patient Safety (NPSA), and National Institute for Clinical Excellence (NICE) advice and reporting pathways with the Care Quality Commission (CQC).

### **Safeguarding Training**

A training strategy has been completed which outlines training levels underpinned by Agenda for Change Knowledge and Skills framework (KSF) Core Dimension 3 which focuses on maintaining and promoting health, safety and security of all those who come into contact with Trust services.

The Virtual Learning Zone (VLZ) Programme has been updated to comply with Luton and Bedfordshire Safeguarding processes. Training Levels 1 and 2 for Luton and Bedfordshire is now at 100% compliant. Training compliance is a standard agenda item at the Safeguarding group.

Additional training regularly takes place for example

- Common Assessment Framework for children has been given to staff in Luton and Bedfordshire to raise awareness of issues for children of adult clients.
- Awareness raising sessions on request or where need identified.

### **Key Performance Indicators (KPI)**

The number of referrals to Children's social care is reported regularly to the Trust Board, and the outcome of these referrals is monitored.

### **Pathways- Human Resources / Incident / Complaints/ Patient Advice and Liaison Service**

Safeguarding is an inherent part of many Trust services. Pathways have been established with the above departments to ensure safeguarding is considered and responded to in a timely and effective way. The Safeguarding team have recently been involved in the development of the Datix reporting system which will ensure consistent processes and responses throughout the Trust.

### **Strategic Framework 2010-2013**

A Strategic Framework for the Safeguarding service has been developed and agreed by the Executive Team. The Framework aims to establish the vision for the Trust's Safeguarding Service for the period 2010-2013. The strategic framework builds on existing achievements and demonstrates the Trust's continued commitment toward ensuring clients are safeguarded, families are supported and staff are skilled in recognising and responding to Safeguarding issues. The Framework includes a number of key priorities including:

- Structure and Reporting Arrangements
- Clinical Governance

- Partnership Working
- Serious Case Reviews
- Strengthening Learning
- Equality and Diversity
- Human Resources

Key objectives for 2011 are placed on the Trust Safeguarding Action plan to ensure compliance.

The Trust annual plan and Integrated Governance plan emphasise the importance of Safeguarding and place it as a high priority within future plans.

#### **Partnership Working - Local Safeguarding Children Boards**

The Trust is actively represented on 5 Local Safeguarding Children Boards. This representation is an important part of developing and influencing services for Trust clients. The Trust is able to offer expertise to Boards on Mental Health, Drug and Alcohol and Learning Disability issues.

#### **Safeguarding Activity**

In the year 2010/2011 staff from South Essex Partnership Trust (SEPT) in Bedfordshire and Luton made a total of 85 referrals to Local Authorities, both in the form of child protection/child in need referrals and Common Assessment Framework assessments.

Since July 2010 the outcomes of referrals have been recorded and monitored and this information will be incorporated into the reporting framework.

#### **Safeguarding Developments - Safeguarding Leads**

There are currently seven Safeguarding Children Leads within the Bedford Borough area of the Trust and an additional eight leads who work across the county as a whole. The Leads are an active group who champion the safeguarding agenda within their respective teams by cascading information and advising colleagues. The safeguarding children leads meet with the Named Professional for Safeguarding Children and Head of Safeguarding six times a year. This meeting gives an opportunity to share information with practitioners and provides a forum for group supervision around safeguarding children cases. Minutes from these meetings are fed into the Safeguarding group meetings.

#### **Trust Intranet – Safeguarding Site**

The Safeguarding link on the Trust Intranet now contains all processes, policies and referral forms regarding Safeguarding across the Trust. A weekly National Society for the Prevention of Cruelty to Children (NSPCC) bulletin is available in addition to safeguarding research and training flyers etc. 'Lessons learnt' is produced following the completion of a serious case review. Staff now routinely access the site for referral forms etc.

The latest Safeguarding news update, details the guidance for '*Children who go missing or run away from home*'. This emphasises the importance for

South Essex Partnership Trust staff to follow the protocol for children who fail to attend appointments as this may be associated with those who go missing. The safeguarding site currently contains a summary of the lessons learnt from the Central Bedfordshire Child J Serious Case Review.

### **Intensive Support Team outcomes**

The Panel concluded that South Essex Partnership Trust had effective Safeguarding processes in place and praised the commitment of the Named Professional for Luton and Bedfordshire and the high priority the Trust gives to the Safeguarding agenda.

The Panel members spent a morning on Poplar Unit in Essex, including the school rooms. The Chair of the Panel stated that Poplar unit was '*Indicative of a Partnership Trust at its best*' and particular praise was given to the structure of the Crisis Team, the Contract form that family/Child /Young Person completes on admission, the structured routine and activities offered and the enthusiasm of staff.

### **Poplar Adolescent Unit**

Poplar Unit is an 11 bed unit for children and adolescents with Mental Health problems in Essex, Luton and Bedfordshire. Poplar Unit has two Safeguarding Leads and the Safeguarding Team meet with the Manager, Leads and School staff on a monthly basis. A Safeguarding form was developed in 2009 for all concerns regarding Poplar clients. These forms are now regularly used and copied to the Safeguarding Team. The Crisis team now also routinely use these forms and work effectively with the Safeguarding Team.

### **Audit Programme - Safeguarding Children Audit Programme**

A number of Audits for the Safeguarding Children service have taken place in 2010.

The Audit of Safeguarding Awareness amongst practitioners throughout the Trust was completed in June 2010 and demonstrated continued improvements in the level of awareness of key safeguarding information amongst staff.

In June 2010 the Audit of Referral Standards was also completed and demonstrated that referrals sent by South Essex Partnership Trust staff in Bedfordshire and Luton to Local Authority children's social care teams were of an acceptable standard; however some areas for development were identified. An action plan was developed and has been monitored through the Safeguarding Group; with outstanding actions incorporated into the Group's action plan.

In January 2011 an audit of adherence to the requirements of the Child and Adolescent Mental Health Service (CAMH) operational policy with regard missed appointments was undertaken and the findings of this audit largely demonstrated that appropriate actions are being taken when initial and follow-up appointments are missed by service users.

### **Serious Case Reviews Audit**

The Trust has completed a number of audits following the recommendations from Serious Case Reviews. All audits have been submitted and accepted by the Local Safeguarding Children Board and include:

- Evidence that practice has improved following training
- Safeguarding Supervision
- Record Keeping and storage
- Process of feedback to staff and teams involved in a Serious Case Review
- Process for those children who Did Not Attend (DNA) appointments

The auditors concluded that 'South Essex Partnership Trust' (SEPT) has effective arrangements in place to address the issues arising from Serious Case Reviews.

National Institute for Clinical Excellence (NICE) recommendations Child Maltreatment (979) Audit

National Institute for Clinical Excellence (NICE) issued guidance in 2009 to improve child protection by promoting early recognition of suspected maltreatment within the National Health Service (NHS). The aim of the guidance was to raise awareness of the clinical features associated with maltreatment and the possibility of it. As a result the Trust became a National Institute for Clinical Excellence (NICE) Stakeholder.

### **Child Protection Referrals Audit**

An audit was undertaken within Child and Adolescent Mental Health Service (CAMHS) teams in Essex to explore Child Protection Referrals to Children's Social Care and their outcomes. The results of this audit were reported to the Safeguarding Group meeting in January 2011. Five recommendations have been made from this audit to ensure that staff in Child and Adolescent Mental Health Service (CAMH) is adhering to the requirements of the South Essex Partnership Trust (SEPT) Safeguarding Children Policy and multi-agency guidance.

### **Serious Case Reviews**

- An annual report on Serious Case Reviews was submitted to the Trust Executive Team in June 2010 and gave a detailed overview of Serious Case Reviews, the impact on South Essex Partnership Trust (SEPT) and the actions taken. In March 2010 the Department for Children Schools and Families (DCSF) published the updated process for Serious Case Review in the *Working Together to Safeguard Children 2010* Document. Until June 2010 Local Safeguarding Children Boards were expected to publish an Executive Summary of each Serious Case Review on their website. However the Government has issued revised guidance and from June 2010 all new Serious Case Reviews will publish the Full Overview Report on their websites. To date there have been no new Serious Case Reviews tabled within the Trust area for Trust clients.
- Office for Standards in Education (Ofsted) maintains the responsibility for evaluating the Local Safeguarding Children Boards Overview Report,

Executive Summary and agency's Individual Management Reviews (IMR). Ofsted measures reports against a set of grade descriptors as either, *Outstanding, Good, Adequate, or Inadequate*.

The Trust is expected to raise awareness of the learning identified in every Serious Case Review regardless of Trust involvement. As a result the Safeguarding Intranet site regularly contains a 'Lessons Learned' section involving a Serious Case Review.

### **Forward Plans**

The Trust Safeguarding service will continue to develop and improve services for clients. The forward plan focuses on key areas which will be integrated into the Safeguarding Group action plan and monitored monthly for compliance. The plan includes:

- Completing all domains outlined in the Safeguarding Service Strategic Plan for 2011
- Implementing a single Safeguarding Database across the Trust
- Update the Training programme in accordance with National and Local protocols
- Continue to improve the percentage of staff accessing training
- Ensure there are robust Safeguarding links within the Datix system

### **Conclusion**

This annual report seeks to inform the Local Safeguarding Children Boards about the Trust's continued commitment to strengthening arrangements for Safeguarding Children.

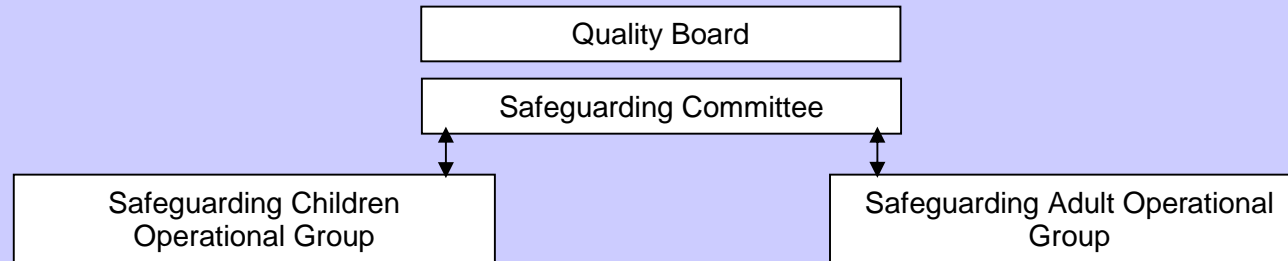
## **4.10 Bedford Hospital**

### **1. ANNUAL REPORT SAFEGUARDING CHILDREN AND YOUNG PEOPLE**

2. This report reviews progress, compliance and gaps in the last financial year for Safeguarding Children and Young People and details the activity in the fourth quarter.

### **2.1 CHANGES IN GOVERNANCE STRUCTURES:**

Robust governance arrangements for safeguarding children and young people will inform both the continuation of those governance structures and sharing of experiences to enhance the Safeguarding Vulnerable Adults agenda across the trust. There is now an established Trust wide Safeguarding Committee chaired by the executive lead for safeguarding. Reporting to this Committee are two operational groups: Safeguarding Children Operational Group and the Safeguarding Adult Operational Group. Terms of reference are agreed.



## 1.2 SAFEGUARDING CHILDREN AND YOUNG PEOPLE ANNUAL REPORT- May 2011

### Progress and activity overview 2010/11

#### Policy and processes

- Renewed Safeguarding Children Policy in line with 'Working Together 2010' to include procedural guidelines for Paediatrics, Accident and Emergency (A and E), Maternity and Adult Services.
- Training Strategy updated in line with 'Working Together 2010'
- Developed, implemented and audited the flow chart for children who miss appointments.
- Child Death Overview Panel (CDOP) policy and accompanying resource pack.
- Information sharing agreement with Local Authorities supporting the 'flagging' process (Laming 2009). Updated annually and reviewed quarterly via multi-agency quality monitoring.
- Increase in number of referrals to Safeguarding Children Team as a result of raised awareness through attendance at training.

#### Staffing

- Developed and embedded Paediatric Safeguarding Liaison Nurse post (PSLN). Pump prime money finished, post re-evaluated as effective so continues within Paediatric Staffing establishment.
- Deputy Named Nurse is now a substantive post 0.6WTE.

#### Accident and Emergency (A and E) systems

- Successful development of the relationship between Paediatric Safeguarding Liaison Nurse (PSLN) and 0-19 teams.

## **Governance**

- Continue to have robust governance arrangements through the Trust Wide Safeguarding Committee and the Safeguarding Children Operational Group.

## **Audits**

- Several Audits completed in line with 'Working Together 2010'.

## **Training**

Implemented Training Strategy based on National Institute for Clinical Excellence (NICE) guidance and Scenarios. Impact on outcomes measured by increase of appropriate referrals and expressed increase in staff knowledge and confidence (evidenced in evaluation).

## **2. SAFEGUARDING CHILDREN AND YOUNG PEOPLE QUARTER FOUR REPORT**

### **2.1 Introduction**

The following are the key performance indicators derived from the latest government reports and guidance. The Trust has approved systems and processes in place to safeguard children that come into contact with the hospital. Trust staff work well within a multiagency context to safeguard and promote the welfare of children and young people. To ensure that these systems and processes are embedded and working there will now be a focus on auditing their effectiveness. This will provide the assurance that systems and processes are effective and safe.

#### **2.1.1 Key performance Indicators:**

- **Quality Assurance**
- **Training**
- **Clinical supervision**
- **Audits**

### **2.2 Quality Assurance**

**Operational processes to meet Laming recommendations (2009), Care Quality Commission (CQC 2009) and Working Together (2010)**

The **outstanding** issues from the above report and guidance are contained within the following table:

Issue	Update	Timescale	By Whom	Outcome
The flag for when a Child protection plan is in place can be missed by reception staff in Accident and Emergency (A and E) due to the background colour being the same as the flag.	Flag is recorded on Integrated Patient Management System (iPMS). Not able to be printed out on Casualty Card (CAS card) to be given to the clinicians. On the risk register and IT have been asked to address these issues. The lack of Integrated Patient Management System (iPMS) 'talking to' ExtraMed (IT software) has been upward reported by Information Governance Committee.	July 11	Information Technology (IT)/ Integrated Patient Management System (iPMS). manager	As yet unresolved
Record child's school on print out of the Casualty Card (CAS card) from Integrated Patient Management System (iPMS).	On the risk register and Information Technology (IT) have been asked to address these issues. The lack of Integrated Patient Management System (iPMS). 'talking to' ExtraMed' has been upward reported by Information Governance Committee			
Feedback from Social Care following a referral.	Referring health professional/Named Nurses chasing social care Safeguarding liaison nurse supports this process	Reviewed quarterly	Named Nurse and Deputy	Reported on at Quarterly meetings with Local Authorities
Automatic referral in special circumstances	Policies in place, referral made when there are known drug and/or alcohol abuse, domestic abuse, mental illness that may impact on children in the home	September 2011	All	Audit to be planned
All patients asked about dependants on admission	Space on the admission forms to record this, training to be reviewed and practice to be audited.	Sep 2011	All	Audit planned by Safeguarding adult team

## 2.3 Training

### 2.3.1 Numbers of staff with up to date training

Attendance at training is recorded on a rolling year plan. Additional efforts have been focused on increasing attendance in groups 2 and 1, whilst maintaining vigilance with staff in groups 3, 4, 6 who work directly with children.

Staff groups in Working Together (2010)	% in date with their training
4 Those who have <b>particular specialist</b> child protection responsibilities	100%
6 <b>Operational Managers</b> of services for children, young people and/or parents/carers	100%
3 Those who work <b>predominantly</b> with children, young people and/or parents/carers	79%
7 <b>Senior managers</b> responsible for strategic management of services for children, young people and/or parents/carers	100%
2 Those in <b>regular contact or have a period of intensive but irregular contact</b> with children, young people and/or parents/carers	61%
1 Those who have <b>infrequent/occasional contact</b> :	76%

Particular focus is on the Group 2 medical staff to increase their attendance at training.

## 2.4 Safeguarding Supervision

### Internal and external systems in place

External supervision is accessed by the Named professionals within the Trust, currently from the designated office in National Health Service (NHS) Bedfordshire and the named Doctor is seeking external supervision.

Internal supervision, consisting of support and challenge, is offered by the Named professionals for all staff in the Trust involved in any child or young person about whom there is a safeguarding concern. This has been accessed by some staff and happens informally. Training for the Named professionals has occurred this year.

## 2.5 Audits

### 2.5.1 Internal Clinical Audit plan

Completed audits:

- Schools to include documentation of home educated children
- Flags identified by Accident and Emergency (A and E)
- Feedback received by hospital from Social care

**Planned audits:**

- Record keeping, to include personalised care plans agreed with parents documented in the notes and completeness of the Information Sharing Forms
- No child about whom there is a concern should to be discharged without consultant approval
- Did Not Attend (DNA) follow up (**Care Quality Commission CQC Ch 3**)
- Recording of all in-patient's dependants on admission

**To be planned audits:**

- **Automatic referral** where domestic violence or drug or alcohol abuse or mental ill health may put a child at risk of abuse or neglect (**Laming 2009, 4.4, recommendation 20**)

**Resulting action plans from audits to complete the activity:** For each audit there will be actions that will be incorporated into the Trust's Safeguarding Children work plan, monitored at the operational group, reported to The Trust Wide Safeguarding Committee, Business Unit Quality Boards and in the Quarterly updates to the Trust Board

**2.5.2 External Audits/Inspections**

- Prepare for external audit/inspection by Care Quality Commission (CQC) / Office for Standards in Education (Ofsted).
- Care Quality Commission (CQC) will carry out a number of unannounced inspection visits.
- Evidence for imminent announced inspection of Safeguarding Children with a 'Looked After Children' focus submitted March 2011. Date of inspection is awaited. Interview candidates and focus groups prepared.

**2.6 KEY ISSUES for Children and Young People agenda taken forward into 2011/12 are:**

**2.6.1 Quality Assurance:**

- Audit is required to ensure that the systems and processes developed over the last year are working and embedded into everyone's practice.
- Monitor the capacity to attend increased meetings of the Joint Performance Management and Quality and Audit sub group of the Local Safeguarding Children Boards.
- Prepared for upcoming external inspections including Looked After Children, Care Quality Commission (CQC)/ Office for Standards in

Education (Ofsted).

### **2.6.2 Training:**

- Expand pool of scenarios to be used in training.
- Audit staff Safeguarding Children competencies in order to evaluate training effectiveness.
- Capturing Group 2 medical staff

**2.6.3 Internal Audits** to be carried out this year identified, report recommendations at audit or Business Unit Quality boards and ensure action plans are monitored until completed.

## **4.11 Bedfordshire Youth Offending Service**

### **1. Context**

Bedfordshire Youth Offending Service operates as a shared service across Bedford Borough and Central Bedfordshire.

The service works on a statutory basis with young people aged 10 – 17 years, who have come to the notice of the criminal justice system. Young people range from those who have received a Final Warning, through to young people who are serious and persistent offenders serving custodial sentences, and those released from custody. Intervention with young people who have appeared before the Youth Court is determined by an assessment of risk and vulnerability; the risk level is identified and the type and frequency of contact is decided accordingly. This is known as the Scaled Approach, and designates young people at Standard, Enhanced or Intensive level of risk. The Scaled Approach was introduced in November 2009.

In addition to statutory activity, Youth Offending Services nationally have been responsible for providing early intervention and prevention services, in conjunction with partners, for children and young people from the age of 8 years, who have been identified as at risk of involvement in crime and anti-social behaviour. Funding was primarily provided through grant from the Youth Justice Board, with additional contribution from each local authority Area Based Grant. This funding has now been significantly curtailed and the Youth Inclusion, Youth Inclusion and Support, Mentors and Peers and Diversity Projects have all ceased as a result.

Prevention/early intervention activity is now concentrated in developing a Triage Service, and strengthening restorative disposals, in conjunction with Bedfordshire Police. Triage will identify children and young people at risk or in need and will enable Youth Offending Service to assess and signpost, deliver short term intervention, or refer on to other agencies as appropriate.

Restorative disposals provide an alternative solution to process through the criminal justice system and may provide a greater degree of satisfaction to

victim.

### 1.1 Bedfordshire Youth Offending Service Caseload Data

There were 404 active interventions during 2010/11 which relates to 229 Young People.

Scaled Approach Levels	Bedford Borough	Central Bedfordshire	Total
Standard	62	72	134
Enhanced	88	74	162
Intensive	23	11	34
N/A	56	60	116
<b>Total</b>	<b>229</b>	<b>217</b>	<b>446</b>

### 2. Performance Targets

Bedfordshire Youth Offending Service is expected to make a difference in three areas:

- Reduce number of first time entrants to the criminal justice system
- Reduce the rate of proven re-offending
- Reduce the number of young people receiving a custodial sentence

#### 2.1. First Time Entrants (FTE)

First Time Entrants refer to children and young people who receive a Police Reprimand, Final Warning or a substantive outcome (sentence), from Court. First Time Entrants are measured by comparing corresponding quarters in each year. Bedford Borough has shown an overall reduction in 2010/11.

NI		Local Target	Bedfordshire Youth Offending Service 07/08	Bedfordshire Youth Offending Service 08/09	Bedfordshire Youth Offending Service 09/10	Bedford Borough 09/10	Bedfordshire Youth Offending Service 10/11	Bedford Borough 10/11
111	First Time Entrants	<-5%	28.6% reduction	15.6% reduction	4/404 14.89% reduction	7.82% reduction	300/414 26.55% reduction	177/154 12.97% reduction

#### 2.2. Proven Re-offending

A cohort of young people is established between January - March. The cohort includes all young people who have received a pre-court disposal, a substantive outcome (sentence) or who have been released from custody in the period. They are tracked for 12 months to determine the number of offences they commit. The average re-offending rate can then be calculated.

NB This is an annual return which is analysed 3 months in arrears. The aim is to achieve a low figure.

NI		Bedfordshire Youth Offending Service <b>05 Cohort</b> 12mths baseline	Bedfordshire Youth Offending Service <b>08 Cohort</b> 12mths	Bedford Borough Council <b>08 Cohort</b> 12mths	Bedfordshire Youth Offending Service <b>09 Cohort</b> 12mths to 30th June	Bedford Borough Council <b>09 Cohort</b> 12mths to 30th June	Bedfordshire Youth Offending Service <b>2010 Cohort</b> 9mths to 31st Mar	Bedford Borough Council <b>2010 Cohort</b> 9mths to 31st Mar
19	Proven Reoffending Offence Frequency Rate	1.18 (293/248)	0.87 (225/258)	0.83 (93/112)	1.14 (197/173)	1.39 (89/64)	0.78 (106/135)	1.00 (55/55)

It should be noted that as we build on the success of initiatives to reduce First Time Entrants (FTE), those young people included in the re-offending cohort necessarily represent more serious and entrenched patterns of offending behaviour, which may reduce capacity to impact effectively on re-offending.

### 2.3 Reduce custodial sentences

The number of custodial sentences nationally has been falling and this has enabled the de-commissioning of a number of young offender institutions. Traditionally, Bedfordshire has been perceived by some as having a Bench, with high levels of custodial sentences and remands. Bedfordshire Youth Offending Service has worked with magistrates, court staff and the Howard League to analyse this position and highlight alternatives where appropriate.

In relation to custodial sentences, the rate has fallen steadily and appears to have stabilised.

	<b>Bedford Borough Council 2009/10</b>	<b>Bedfordshire Youth Offending Service 2009/10</b>	<b>Bedford Borough Council 2010/11</b>	<b>Bedfordshire Youth Offending Service 2010/11</b>
<b>Number of Young People receiving a Custodial</b>	11	19	9	13

<b>sentence</b>				
<b>% Outturn</b>	4.55%	3.68%	3.00%	3.96%

### Secure Remands

However, the position in relation to secure remands is concerning. The Youth Justice Board and Ministry of Justice are concerned about the national picture, which has seen increasing numbers of young people remanded, often for short periods of time. Significantly, not all young people remanded go on to receive a custodial sentence, suggesting that the remand may have been unnecessary.

	<b>Bedford Borough Council 2009/10</b>	<b>Bedfordshire Youth Offending Service 2009/10</b>	<b>Bedford Borough Council 2010/11</b>	<b>Bedfordshire Youth Offending Service 2010/11</b>
<b>Number of Young People being Remanded into Custody</b>	10	20	15	21
<b>% Outturn</b>	9.48%	12.25%	19.15%	14.07%

Bedfordshire Youth Offending Service Chief Officers Group is aware of this issue and has re-constituted a multi-agency sub group to look at the issue. Areas that the group will focus on are:

- Non- youth court remands
- Out of hours remands
- Robust Bail Support packages

New legislation will transfer responsibility for funding of all secure remands from the centre to Local Authorities. Although some funding will be transferred, those local authorities with significantly high rates of remand will experience pressure to fund placements.

### 3. Risk and Vulnerability

Assessment using the ASSET assessment tool is key to all Bedfordshire Youth Offending Service activity.

The tool uses static and dynamic factors to produce a score that may highlight the need for further assessment in relation to risk and vulnerability.

314 start ASSETs were completed in 2010/11.

#### 3.1 Vulnerability

	Very High	High	Medium	Low	Total
No of assessments	10	24	89	191	314

#### 3.2 Risk of harm to others

	Very High	High	Medium	Low	Total
No of assessments	1	21	81	211	314

As a result of the above assessments, indicating concerning levels of risk and vulnerability, 49 young people were subsequently subject to Risk and Vulnerability Management Plans.

### 4. Multi Agency Public Protection Arrangements

#### Referrals to MAPPA

4 young people were referred into Multi Agency Public Protection Arrangement (MAPPA); only one was a Bedford resident, the others were placed in private residential establishments by other local authorities. The local Youth Offending Service is required to supervise on behalf of the other local authorities.

### 5. Sexual Offences

5 young people were convicted of sexual offences in 2010/11, all were male. One young person aged 12 years received a police reprimand and did not become known to the Bedford Youth Offending Service (BYOS). Two young people aged 11 years and 15 years received a Final Warning, with an intervention programme delivered by BYOS. One 17 year old received a Final warning and the fifth young person, also aged 17 years, was transferred to probation.

### 6. Serious Incidents

There has been one serious incident under the definition used by the Youth Justice Board. This related to an incident of self harm designated as a determined suicide bid and connects to a group of young people, about whom there have been recent concerns, resulting in oversight by the Local

Safeguarding Children Board.

Youth Justice Board have analysed the local management report and indicate that:

- the assessment could have been more robust
- the interface between specialist and case worker could have been better

Bedfordshire Youth Offending Service accepts this conclusion and has used the findings with specific practitioners and within the wider team as a learning tool.

## 5. Priorities for 2011 - 2012

The Bedford Borough Safeguarding Children Board recognises the impact of the economic difficulties and the impact on resources locally. However, ensuring that services continue to cooperate to safeguard children effectively must be a priority for all partner agencies as they navigate this period of change.

### Context

**5.1 The Impact of the Munro Review on the Local Safeguarding Children Board role and function:** The two strategic priorities and ten key objectives ( see 5.8 below) are likely to remain relevant; however a sharper focus on child protection activity may be required following on from the findings of the final Report by Professor Munro which is expected April 2011 with recommendations to ministers. The interim report, published 1 February 2011 recommends strengthening the statutory functions of Local Safeguarding Children Boards to enhance their scrutiny role across the partnership.

### **5.2 The impact of the Local Government Finance Settlement on the provision of early intervention services**

*5.2.1 'I recommend proper co-ordination of the machinery of government to put Early Intervention at the heart of departmental strategies, including those seeking to raise educational achievement and employability, improve social mobility, reduce crime, support parents and improve mental and physical health.'*

*Graham Allan, January 2011 Report on Early Intervention*

5.2.2 Any focus on improvements to the child protection system in Bedford Borough should be aligned to continued investment in early intervention services where financial settlements can allow.

### **5.3 The rise in the number of children subject to child protection plans**

5.3.1 Nationally the Assistant Directors of Children's Services has noted a 33% rise in children subject of Child Protection Plans across respondent authorities – equivalent to an all England increase of approximately 9,200 children. The impact on those professionals involved in child protection functions, in attending statutory child protection meetings alone equates to additional hours per case, without accounting for the necessary travel time, writing reports or completing casework recording or safeguarding work with the child and family.

5.3.2 Locally in Bedford Borough there has been a significant increase in the number of children subject to child protection plans, showing an increase in the past year of 41%.

### **5.4 The impact of Educational Reforms outlined in the *Schools White paper The Importance of Teaching: Schools White Paper 2010*.**

5.4.1 The movement towards academies as an option for schools may have implications for the way in which the Bedford Borough Safeguarding Children Board relates to the schools sector and there will be a vital role in maintaining a focus and accountability for safeguarding in partnership with schools.

### **5.5 The impact of the NHS White Paper, *Equity and excellence: Liberating the NHS***

5.5.1 Nationally Local Safeguarding Children Boards have had common issues concerning:

- The development of Sexual Assault Referral Centre (SARC) for the improved handling of sexual abuse allegations
- Succession planning and provision of Child Protection Medicals
- The maintenance of children's safeguarding services within the changing National Health Service structures

5.5.2 The impact of future arrangements on safeguarding systems will be a key question for the Bedford Borough Safeguarding Children Board and the future of designated staffing and duties.

### **5.6 The Impact of the Changes within the Youth Justice System**

5.6.1 The full implication for changes to the Youth Justice Board are still to be understood completely, but along with the overall changes in the justice system: *Breaking the cycle: effective punishment, rehabilitation and sentencing of offenders Green Paper 2010* and changes to the care planning regulations for children in care and the ongoing impact of the Southwark Judgment, there will be a continuing need to consider the safeguarding of older adolescents. This will require close co-operation with Bedfordshire Police and Bedfordshire Probation.

**5.7** The Bedford Borough Children's Trust Board has identified the following 4 strategic priorities:

**Healthy**

Bedford Borough Children's Trust Board want a Borough where there is equal access to health provision for all children and young people, a Borough where we challenge the causes of child poverty and strive to remove barriers to success in life.

There are four priorities to help us achieve this:

- To ensure all babies and infants get the best start possible;
- To encourage and support a healthy, enjoyable and active lifestyle at home, in school and in the community;
- To encourage young people to avoid harmful, risk taking behaviour;
- To target emotional wellbeing services where they are most needed.

**Safe**

Bedford Borough Children's Trust Board wants a Borough where all children and young people are safe and happy at home, school and in their local community. There are five priorities to help us achieve this:

- To ensure that children, young people and their families feel safe and happy at home, in school and in their local community;
- To make our services easy to understand, easy to access and more responsive;
- To minimise the impact that poverty has on child safety;
- To understand the impact of crime on children who are victims of it;
- To understand more about how young people in the Borough are affected by self harm, to understand the causes and to work together to address those causes.

**Aspire**

Bedford Borough Children's Trust Board wants a Borough where all children and young people have high aspirations and expectations regardless of their background or particular needs. There are four priorities to help us achieve this:

- To develop learning opportunities at school, within the home and within the community and increase choice for children and young people;
- To provide a full range of play, leisure, sport and cultural activities to support young people in achieving their full potential;
- To focus on narrowing the achievement gap for our most vulnerable children and young people;
- To support those young people most at risk of not being in education, employment and training.

**Workforce development**

We want a world class workforce working with and for children and young people in the Borough. There are three priorities to help us do this:

- To encourage people to join and remain in the children's workforce, offering clear career pathways;
- To ensure everyone working with children and young people in Bedford Borough understands their role within the 'One Children's Workforce';

- To support Bedford Borough children's workforce so that they are trained and able to keep children and young people safe and in particular that they are able to give vulnerable children all the support they need.

#### **5.8 Bedford Borough Safeguarding Children Board Strategic Priorities 2011 – 2012**

**Having considered all the areas of work it has been decided to identify 2 strategic priorities and 10 key objectives.**

##### **The 2 strategic priorities for Bedford Borough Safeguarding Children Board in 2011 - 2012 are:**

- To improve the effectiveness of Child Protection interventions, analysing carefully the reasons why increasing numbers of children have become subject to child protection plans and looking at ways to prevent this. This will involve maintaining strong relationships with health and schools during a period of transition and promoting the safeguarding of older adolescents who may be vulnerable to crime, homelessness, or sexual exploitation.
- To incorporate the lessons from the Central Bedfordshire Serious Case Review Child J, namely the identification of sexual offending and liaison between adult criminal justice services and children's social care in relation to work with sex offenders and vulnerable adults.

##### **The 10 key objectives for Bedford Borough Safeguarding Children Board in 2011 - 2012 are:**

- To implement any relevant recommendations arising from the Munro review
- To ensure that a comprehensive, set of multi-agency policies, practice and guidance is available to all staff working with children across Bedford Borough
- To further develop the agreed performance framework to measure and report on Safeguarding performance
- To ensure the effectiveness and quality of the multi agency safeguarding training improves outcomes for children
- To ensure that Serious Case Reviews are initiated appropriately and are timely, of good quality, and deliver maximum learning for all agencies
- To ensure safer recruitment practices across all agencies working with children in Bedford Borough
- Confirm the funding for the operation of the Bedford Borough Safeguarding Children Board for 2012-13
- To develop models of Multi Agency Safeguarding Practice/Delivery
- To appoint Lay members to the Bedford Borough Safeguarding Children Board
- To identify those children and young people affected by honour based violence, trafficked children, risk and parental drug and alcohol use, and the radicalisation of young people.

## Appendix 1 – Structure of the Bedford Borough Safeguarding Children Board

### Membership

Chair – Laura Eades  
 Vice Chair – Andrew Richer (Bedfordshire Police)  
 Bedford Borough Council  
 NHS Bedfordshire  
 South Essex University Partnership NHS Trust (SEPT)  
 Bedfordshire Police  
 Bedfordshire Police Authority  
 Bedfordshire Probation Trust  
 CAFCASS  
 UKBA  
 SERCO  
 Bedford Borough Council Adult Social Care  
 Lead Member for Children’s Services, Bedford Borough Council  
 Voluntary Organisations – Children and Young People  
 Two Lay members – Recruitment process underway

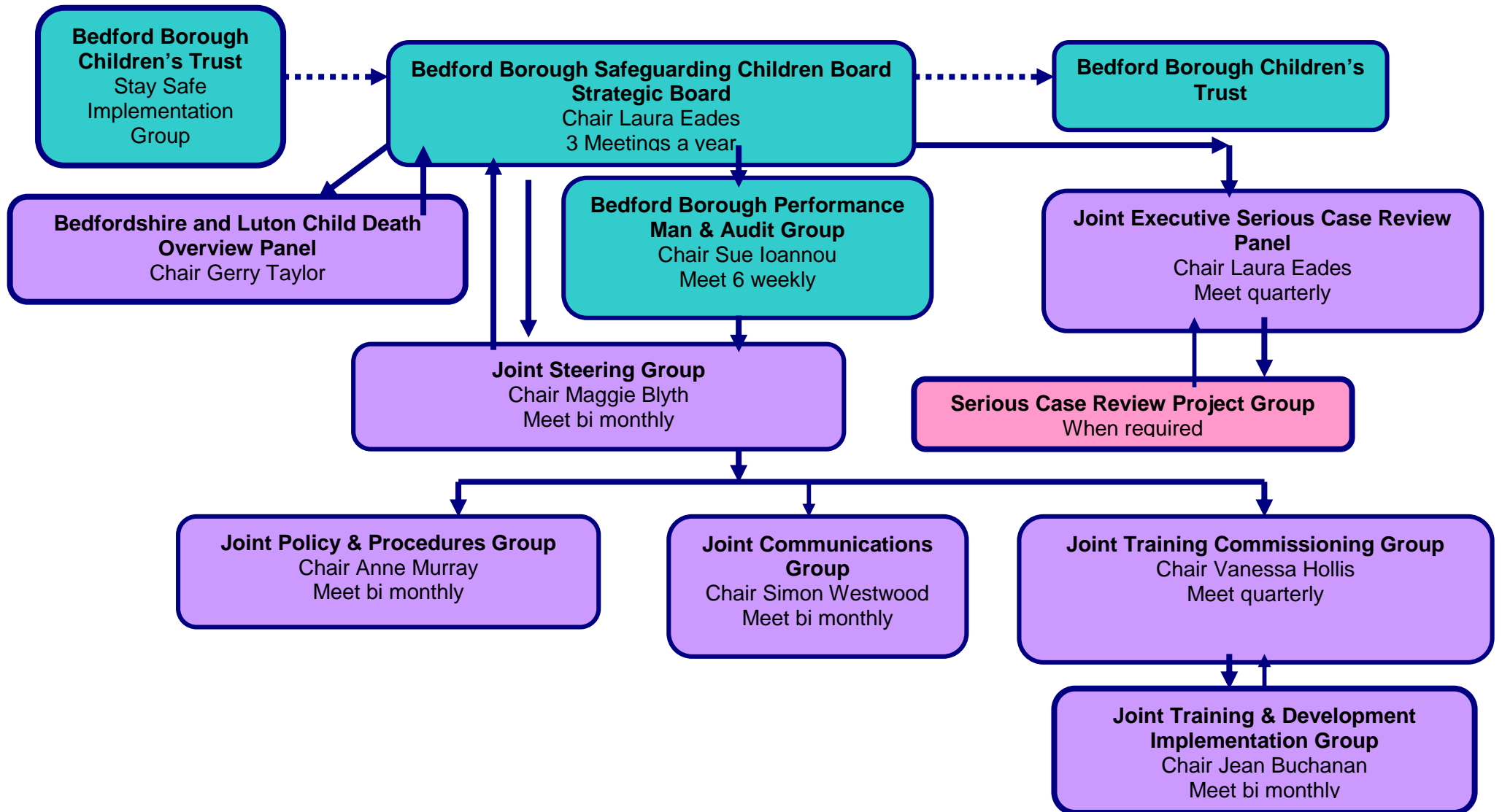
<b>Bedford Borough Safeguarding Strategic Board 4 meetings April 2010 - March 2011</b>
--

Name	AGENCY/ORGANISATION	NO OF MTGS	NO PRESENT	NO ABSENT	APOLOGIES	COMMENT
Alison Harding	Bedfordshire Probation	4	3		1	Deputy for Linda Hennigan
Andrew Morgan	NHS Bedfordshire	4	1			Left NHS Bedfordshire in September 2010
Andrew Richer	Bedfordshire Police	4	3			In post from July 2010
Angela McNab	NHS Bedfordshire	4	0			In post from November 2011 and represented twice

<b>Name</b>	<b>AGENCY/ORGANISATION</b>	<b>NO OF MTGS</b>	<b>NO PRESENT</b>	<b>NO ABSENT</b>	<b>APOLOGIES</b>	<b>COMMENT</b>
Anne Murray	NHS Bedfordshire	4	2			Deputy for Angela McNab and represented once
Anthony Cole	South Essex Partnership Trust (SEPT)	4	1			Deputy for Patrick Geoghegan and Elaine Taylor
Chris Hilliard	Bedford Borough Council	4	4			Represented Simon Westwood
Damian Elcock	Bedford Borough Council	4	1			Left Bedford Borough Council on the 25.2.11
David Sawyer	Bedford Borough Council	4	3		1	
Dawn Elaine	SERCO	4	1			Bedford Borough Safeguarding Children Board member and represented once
Eileen Moran	Safeguarding Children Boards' Business Team	4	1		3	
Elaine Taylor	South Essex Partnership Trust (SEPT)	4	0			Deputy for Patrick Geoghegan and represented once
Frank Toner	Bedford Borough Council	4	0		3	Represented 3 times
Helena Hughes	NHS Bedfordshire	4	1			Deputy for Angela McNab and Anne Murray
James Wilkinson	SERCO	4	2			Deputy for Dawn Elaine
John Fletcher	Bedfordshire Police	4	1			In post until July 2010
John Williams	Police Authority	4	1		1	In post from November 2010
Laura Eades	Independent Chair	4	4			
Linda Bulled	VOCypf	4	1			Deputy for Wendie Lovatt
Melanie Johnson	UKBA	4	0		1	In post until October 2010 and represented once

<b>Name</b>	<b>AGENCY/ORGANISATION</b>	<b>NO OF MTGS</b>	<b>NO PRESENT</b>	<b>NO ABSENT</b>	<b>APOLOGIES</b>	<b>COMMENT</b>
Nigel Stone	Bedfordshire Police	4	0			Deputy for Andrew Richer
Patrick Geoghegan	South Essex Partnership Trust (SEPT)	4	0		3	Represented twice
Peter Loose	Bedford Borough Council	4	3		1	Deputy for Frank Toner
Sally Stocker	Safeguarding Children Boards' Business Team	4	3		1	
Simon Westwood	Bedford Borough Council	4	2		2	Represented twice
Wendie Lovatt	VOCypf	4	2		2	Represented once

## Bedford Borough Safeguarding Children Board



## Appendix 2 Income for 2010/2011

<b>AGENCY</b>	<b>CONTRIBUTION (£'s)</b>
Bedford Borough Council	£55,000
Central Bedfordshire Council ( Note Central Bedfordshire contribution reflects the shared funding arrangements for the shared business support unit which supports both authority's Local Safeguarding Children Board Business Support Units)	£55,000
Bedfordshire Police	£26,634
Bedfordshire Probation	£8,378
NHS Bedfordshire	£73,549
CAFCASS	£550
Roll forward from 2009/10	£7,361
<b>Grand total</b>	<b>£226,272</b>

### **Appendix 3 Protocol agreement between Bedford Borough Children and Young People's Trust Board and Bedford Borough Safeguarding Children Boards Governance Arrangements**

#### Accountability arrangements - Children's Trust Board and the Local Safeguarding Children Board

- Both bodies have important but distinctive roles in keeping children safe. The Children's Trust Board has a wider role in the commissioning and delivery of services locally. The Local Safeguarding Children Board is responsible for challenging, through the Children's Trust Board, each member agency on their success in ensuring that children and young people are kept safe.
- The Bedford Borough Safeguarding Children Board will be accountable to the Bedford Borough Council's Executive Director for Children's Services, Schools and Families in respect of its governance. However, the Bedford Borough Safeguarding Children Board will act as an independent voice in respect of monitoring the effectiveness of child safeguarding arrangements within Bedford Borough. It is therefore within the remit of the Bedford Borough Safeguarding Children Board to monitor and scrutinise the safeguarding arrangements of all responsible organisations and bodies within the Borough of Bedford.
- The Independent Chair of the Bedford Borough Safeguarding Children Board is a member of the Children's Trust Board but will not have any chairing responsibilities for this forum. The Executive Director for Children's Services, Schools and Families is a member of the Local Safeguarding Children Board and provides a quarterly update to the Board on the work of the Children's Trust Board. The Independent Chair will meet with the Executive Director for Children's Services, Schools and Families on a quarterly basis. One of these meetings will include an appraisal of the Chair's performance, reported to the Bedford Borough Safeguarding Children Board annually.
- The Independent Chair is accountable to the Bedford Borough Safeguarding Children Board membership and may only make decisions when mandated to do so by the Board.
- The Bedford Borough Safeguarding Children Board will produce a quarterly update to the Children's Trust Board on progress against its Business plan along with issues relevant to the Trust Board.
- The Bedford Borough Safeguarding Children Board will write an annual report to the Children's Trust Board providing an honest assessment of local arrangements to safeguard and promote the welfare of children in Bedford Borough.